

# INDICATIVE MASTER PLAN



## Why is the GBGC being proposed?

In September 2019, the Queensland Government announced the development of the new state-of-the-art GBGC at Purga, Ipswich. Once completed, a new entity will be formed from the memberships of both the Brisbane and Ipswich Greyhound Racing Clubs.

Greyhound racing already contributes more than \$170 million to the Brisbane and Ipswich economies each year. A brand-new centre will be a game changer for the industry and assist the local economy, opening the door to hosting some of the world's most prestigious greyhound races.

The GBGC will be built from scratch to ensure animal safety and care is at the centre of its design and operation. The GBGC is proposed to set new standards for a major greyhound racing facility, in alignment with reforms to the greyhound industry using expert advice from one of Australia's leading researchers in this space.

The three racetracks and facilities will deliver best practice in pre-race preparation, post-race recovery and expert animal care.

The relocation of the operations of the two clubs will also allow the respective current sites to be utilised for other community purposes, including Albion as a venue for Brisbane 2032 Olympic Games and Ipswich for uses more commensurate with the site's showgrounds location.

The \$39.15 million allocated to build the GBGC will be provided from the Racing Infrastructure Fund, where the funds are derived from tax receipts generated by wagering revenue in Queensland.

## About the precinct master plan

This plan shows the general layout of the GBGC's main components:

- Racing and ancillary facilities precinct (including provision for potential future sports fields);
- Canine and community use precinct (including provision for community activities outside those shown on the proposed master plan);
- Existing vegetation buffer;
- Potential future development area.

## About the indicative master plan

Features of the GBGC racing and ancillary features precinct include:

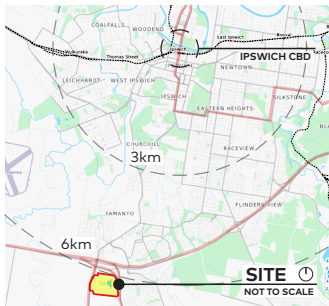
### Greyhound racing and ancillary facilities

- Grandstand and sports club/licenced club
- One-turn track;
- Two-turn track;
- Straight track;
- 80m greyhound sprint tracks;
- 250m greyhound slipping track;
- Young greyhound training area;
- Integrity area, including promotional areas, stir up areas, emptying area and washdown bays; and
- Veterinary clinic.

Canine and community uses:

- Retired greyhound community dog park;
- Young greyhound training area;
- Future indicative provision for athletics track and NRL fields within the turn tracks.

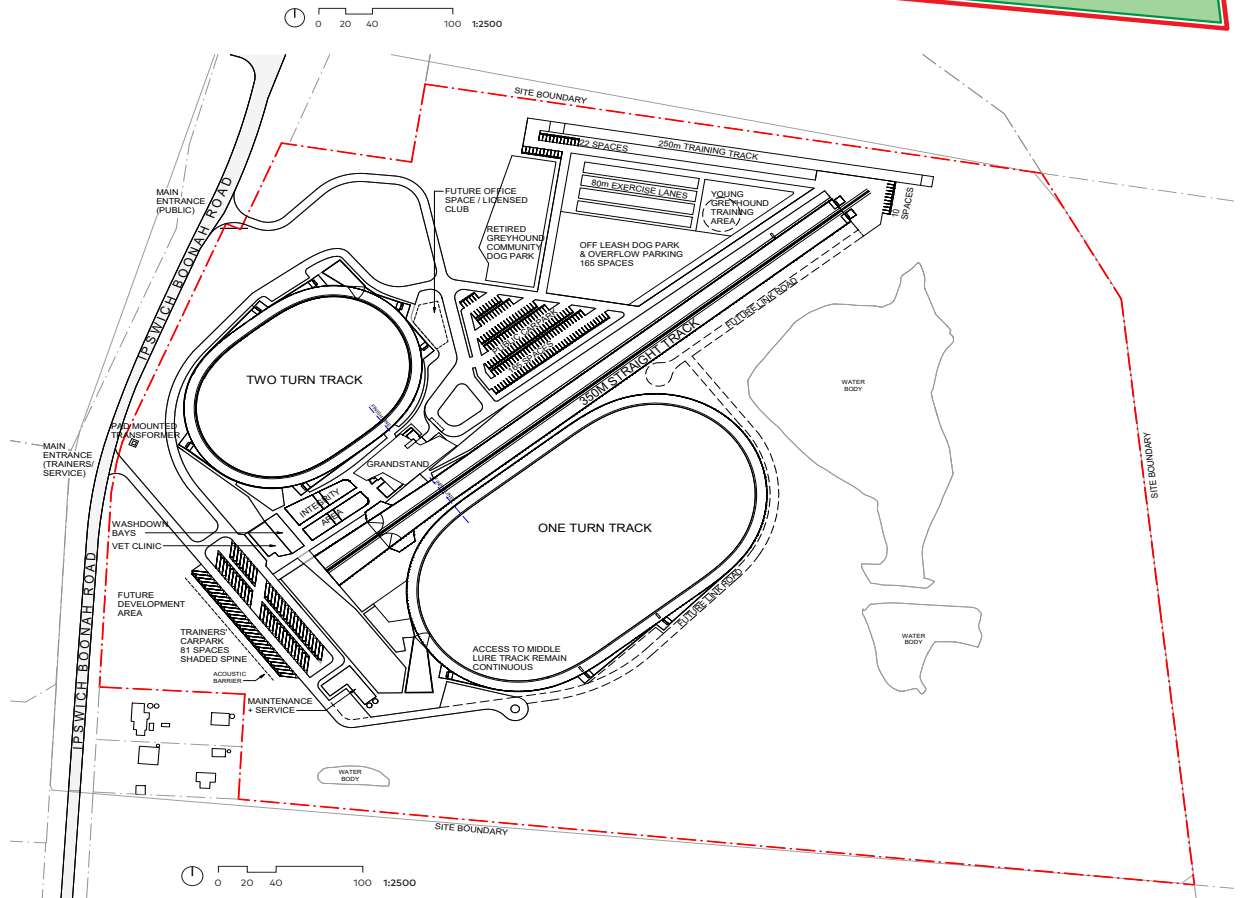
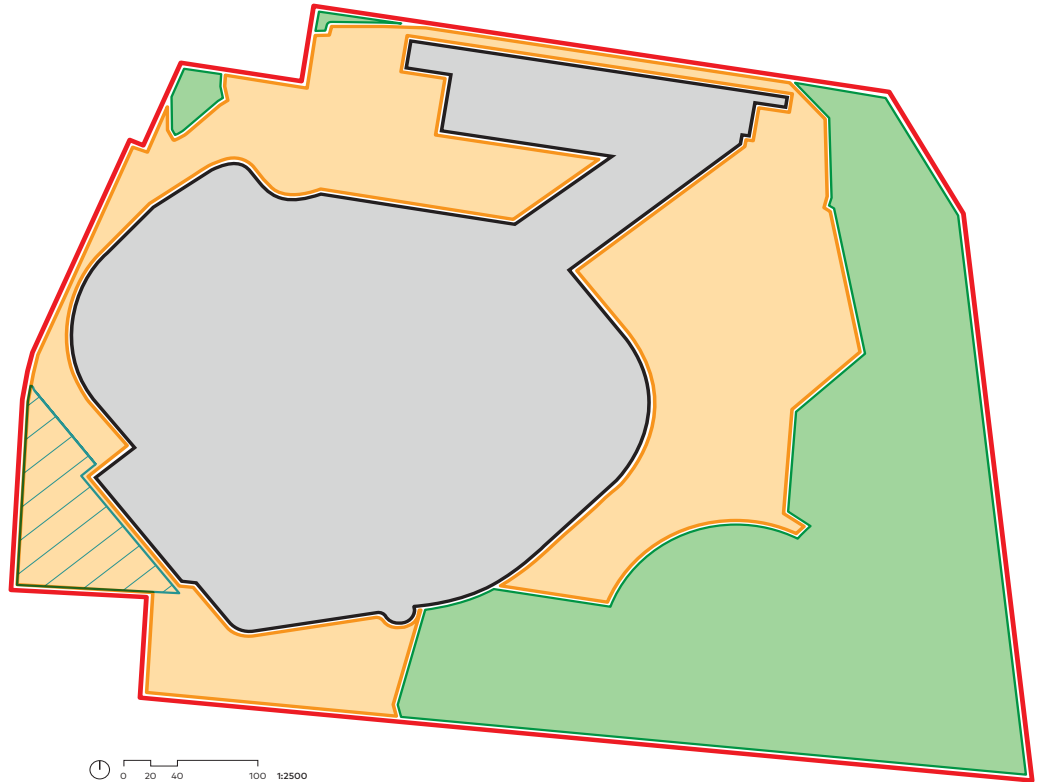
# INDICATIVE MASTER PLAN



LOCALITY PLAN

## LEGEND

-  Greater Brisbane Greyhound Centre (GBGC)
-  Racing and Ancillary Facilities Precinct (including provision for potential future sports fields)
-  Canine and Community Use Precinct (including provision for community activities outside those shown on Proposed Master Plan)
-  Existing Vegetation Buffer
-  Potential Future Development Area



To find out more information and share your thoughts on the GBGC Project:

Visit the website [www.racingqueensland.com.au/gbgc](http://www.racingqueensland.com.au/gbgc)

Email us at [gbgc@racingqueensland.com.au](mailto:gbgc@racingqueensland.com.au)



# INDICATIVE MASTER PLAN

## Vision for a home for all dogs

Our long-term vision is to create a complex that celebrates all dogs: racing dogs, working dogs and companion dogs.

For the best pre-race preparation and post-race recovery, there will be safe movement corridors, cool-down areas with plunge pools, air-conditioned race-day kennels and a veterinary clinic.

It will also be the only centre in the world with a straight track, a one-turn track and a two-turn track to suit the size, age, running gait and athletic abilities of all greyhounds. The GBGC will support a greyhound adoption program to rehome greyhounds when they retire from racing.

## Grandstand and sports club

The grandstand and sports club building will be the landmark building for the GBGC, comprising of three storeys that will be likely to include: foyer, office space/licensed club, multi-purpose lounge/dining area, bar, terrace, grandstand, services and bathrooms, broadcast studio, race callers box and plant rooms.

The grandstand design and location enables spectator viewing of the greyhounds in the pre-kennelling/pre-race area and allows a variety of experiences inside and outside to all tracks to maximise the consumer experience of viewing all three tracks.

## Integrity area and veterinary clinic

The integrity area will comprise of several components, including:

- Race day kennelling area – initial location for racing greyhounds upon arrival and initial checks carried out. Individual kennels for each dog will be provided, along with a vet room, swab room, injury room, stewards room and pre-kennelling services;
- Pre-race area – used for various components of greyhound racing including emptying, promotional area and stir up area;
- Post-race area – once removed from the catching pen at the end of the track where post-race testing occurs;
- Recovery washdown area – used for trainers post race to allow the greyhound to recover.

The GBGC will contain a publicly accessible veterinary clinic that will be used for race day operations, as well as providing veterinary services accessible to the general public.

## Greyhound and canine training tracks and areas

This component will provide training tracks, exercise lanes and young greyhound training areas. It's envisioned that these areas will be accessible by members through a booking process, however they can also be accessed by the greater canine community outside of training purposes. Typically these areas will be utilised earlier in the day prior to racing events.

## Other canine and community use

This area includes:

- Retired greyhound community dog park and off-leash dog park – this will provide dog parks sufficient in size for retired greyhounds and other dogs to run around off-leash and receive adequate exercise and enrichment;
- Playing fields – The masterplan for the GBGC indicatively allows future indicative community uses which could include, where the facility and activities complement the greyhound racing activities, an athletic track and NRL fields within the centre of the one-turn and two-turn tracks. These components are not planned to be delivered with the GBGC but have been identified to demonstrate possible future community facilities.

## Car parking and vehicle circulation

There are two main formalised car parking areas proposed:

- Public car park – for visitors to the GBGC and community facilities. It provides 165 car parking spaces and will be accessed from the main entrance from Ipswich-Boonah Road. There are also additional car parking spaces identified in and around the proposed canine and community use precinct;
- Trainers' car park – provides 81 car parking spaces and will be accessed from the trainers/service entrance off Ipswich-Boonah Road. Members of the public will also utilise this car park to access the veterinary clinic.

## Notional operational times

- Greyhound Racing Operations  
Monday to Sunday: 2pm till 10.30pm (with liquor and gaming to operate until 2am in accordance with the licences);
- Trialling and Training Operations  
Monday to Sunday: 6am till 12pm.

Racing Queensland will ensure that any use of the GBGC outside of these hours will be conducted in a way that minimises noise and light spillage. This could include reduction of announcement systems and lighting levels.