



# Doomben QLD Professional

## Race 1: BECOME A BRC MEMBER Maiden Plate - 2040m

27 January 2025 - 13:36



BRISBANE  
RACING CLUB

Track Rating: Good 4, Weather: Overcast, Rail Position: +7m Entire

Section														
Field Times														
	Overall	1800m	1600m	1400m	1200m	1000m	800m	Last 600m						
	2:07.74 (0:16.57)	1:51.17 (0:11.74)	1:39.43 (0:12.78)	1:26.65 (0:12.92)	1:13.73 (0:12.96)	1:00.77 (0:12.72)	0:48.05 (0:12.37)	0:35.68						
Rank	TAB	Horse/Jockey	Barrier	Top Speed [km/h]	Fastest Section									Distance Travelled [m]
1	12	ALECIA Angela Jones	9	63.5 Overall	0:11.72 400m	2:07.74 [1] (0:16.57)	1:51.17 [1] (0:11.74)	1:39.43 [1] (0:12.78)	1:26.65 [1] (0:13.21)	1:13.44 [2] (0:12.84)	1:00.60 [2] (0:12.76)	0:47.84 [2] (0:12.42)	0:35.42	
2	2	BRIEF SPIRIT Justin Huxtable	4	63.4 200m	0:11.61 400m	2:08.40 [2] (0:17.19)	1:51.21 [7] (0:12.34)	1:38.87 [8] (0:12.78)	1:26.09 [9] (0:13.11)	1:12.98 [10] (0:12.64)	1:00.34 [9] (0:12.75)	0:47.59 [10] (0:12.29)	0:35.30	+12
3	14	WIMOWEH Michael Cahill	1	63.0 400m	0:11.55 400m	2:08.41 [3] (0:17.10)	1:51.31 [6] (0:12.26)	1:39.05 [5] (0:12.61)	1:26.44 [5] (0:13.05)	1:13.39 [6] (0:12.82)	1:00.57 [7] (0:12.57)	0:48.00 [6] (0:12.41)	0:35.59	+7
4	11	ZONTO WILBERFORCE Justin Stanley	2	62.9 400m	0:11.62 400m	2:08.61 [4] (0:17.53)	1:51.08 [10] (0:11.99)	1:39.09 [7] (0:12.63)	1:26.46 [7] (0:12.96)	1:13.50 [8] (0:12.70)	1:00.80 [6] (0:12.71)	0:48.09 [7] (0:12.34)	0:35.75	+6
5	4	SUCH A DUDE Courtney Bellamy	8	62.9 400m	0:11.65 400m	2:08.66 [5] (0:17.71)	1:50.95 [11] (0:12.31)	1:38.64 [11] (0:12.71)	1:25.93 [11] (0:12.85)	1:13.08 [11] (0:12.73)	1:00.35 [11] (0:12.69)	0:47.66 [11] (0:12.29)	0:35.37	+9
6	7	BETTER BELIEVE IT Georgina Cartwright	12	64.5 Overall	0:11.95 1800m	2:08.67 [6] (0:16.69)	1:51.98 [2] (0:11.95)	1:40.03 [2] (0:12.51)	1:27.52 [2] (0:12.86)	1:14.66 [1] (0:12.96)	1:01.70 [1] (0:12.72)	0:48.98 [1] (0:12.37)	0:36.61	-6
7	9	MISS DYNAMO Cody Collis	5	62.3 400m	0:11.74 400m	2:08.68 [7] (0:17.49)	1:51.19 [8] (0:12.27)	1:38.92 [9] (0:12.49)	1:26.43 [8] (0:12.79)	1:13.64 [7] (0:12.86)	1:00.78 [8] (0:12.80)	0:47.98 [8] (0:12.13)	0:35.85	-1
8	8	CAESAR CAKE Jake Bayliss	10	64.5 400m	0:11.56 400m	2:08.71 [8] (0:17.91)	1:50.80 [12] (0:12.26)	1:38.54 [12] (0:12.61)	1:25.93 [12] (0:13.01)	1:12.92 [12] (0:12.73)	1:00.19 [12] (0:12.61)	0:47.58 [12] (0:12.07)	0:35.51	+7
9	6	TRUSTY BANDIT Chris Meehan	6	63.1 400m	0:11.72 400m	2:08.91 [9] (0:17.51)	1:51.40 [9] (0:12.29)	1:39.11 [10] (0:12.69)	1:26.42 [10] (0:12.83)	1:13.59 [9] (0:12.81)	1:00.78 [10] (0:12.57)	0:48.21 [8] (0:12.26)	0:35.95	+1
10	5	ZALATORIS Jason Taylor	11	64.6 Overall	0:12.16 600m	2:09.83 [10] (0:16.76)	1:53.07 [3] (0:12.22)	1:40.85 [3] (0:12.74)	1:28.11 [4] (0:12.90)	1:15.21 [4] (0:12.64)	1:02.57 [3] (0:12.68)	0:49.89 [3] (0:12.43)	0:37.46	+9

Scratched: Snippet Bobbins (#3), Justanother Hungee (#13)

[ ] Ranking at each section and finish  
 -:-:- No data available at this section  
 NA No data available

SCN Saddle cloth number  
 DNF Did not finish  
 DNT Did not track



# Doomben QLD Professional

## Race 1: BECOME A BRC MEMBER Maiden Plate - 2040m

27 January 2025 - 13:36



BRISBANE  
RACING CLUB

Track Rating: Good 4, Weather: Overcast, Rail Position: +7m Entire

Section		Overall	1800m	1600m	1400m	1200m	1000m	800m	Last 600m
Field Times		2:07.74 (0:16.57)	1:51.17 (0:11.74)	1:39.43 (0:12.78)	1:26.65 (0:12.92)	1:13.73 (0:12.96)	1:00.77 (0:12.72)	0:48.05 (0:12.37)	0:35.68

Rank	TAB	Horse/Jockey	Barrier	Top Speed [km/h]	Fastest Section	Overall	1800m	1600m	1400m	1200m	1000m	800m	Last 600m	Distance Travelled [m]
11	1	<b>BARGARA BOUND</b> Michael Rodd	7	61.1	0:12.26	2:10.13 [11] (0:17.07)	1:53.06 [5] (0:12.37)	1:40.69 [6] (0:12.65)	1:28.04 [6] (0:12.73)	1:15.31 [5] (0:12.73)	1:02.58 [5] (0:12.63)	0:49.95 [5] (0:12.45)	0:37.50	+4
12	10	<b>SACRED SHIKOBA</b> Wayne O'Connell	3	62.8	0:12.09	2:11.15 [12] (0:16.90)	1:54.25 [4] (0:12.10)	1:42.15 [4] (0:12.58)	1:29.57 [3] (0:13.01)	1:16.56 [3] (0:12.81)	1:03.75 [4] (0:12.73)	0:51.02 [4] (0:12.41)	0:38.61	+2

Scratched: Snippet Bobbins (#3), Justanother Hungee (#13)

[ ] Ranking at each section and finish  
 -:-:-:- No data available at this section  
 NA No data available

SCN Saddle cloth number  
 DNF Did not finish  
 DNT Did not track



# Doomben QLD Professional

## Race 1: BECOME A BRC MEMBER Maiden Plate - 2040m

27 January 2025 - 13:36



BRISBANE  
RACING CLUB

Track Rating: Good 4, Weather: Overcast, Rail Position: +7m Entire

Section				600m	400m	200m			Last 600m		
Field Times				0:35.68 (0:12.03)	0:23.65 (0:11.78)	0:11.87 (0:11.87)			0:35.68		
Rank	TAB	Horse/Jockey	Barrier	Top Speed [km/h]	Fastest Section	Margin			Distance Travelled [m]		
1	12	<b>ALECIA</b> Angela Jones	9	63.5 Overall	0:11.72 400m	0:35.42 [2] (0:11.83)	0:23.59 [2] (0:11.72)	0:11.87 [1] (0:11.87)	2:07.74	0:35.42	
2	2	<b>BRIEF SPIRIT</b> Justin Huxtable	4	63.4 200m	0:11.61 400m	0:35.30 [10] (0:11.83)	0:23.47 [9] (0:11.61)	0:11.86 [6] (0:11.86)	3.85L	0:35.30 +12	
3	14	<b>WIMOWEH</b> Michael Cahill	1	63.0 400m	0:11.55 400m	0:35.59 [6] (0:11.82)	0:23.77 [5] (0:11.55)	0:12.22 [3] (0:12.22)	3.91L	0:35.59 +7	
4	11	<b>ZONTO WILBERFORCE</b> Justin Stanley	2	62.9 400m	0:11.62 400m	0:35.75 [8] (0:11.85)	0:23.90 [6] (0:11.62)	0:12.28 [4] (0:12.28)	5.13L	0:35.75 +6	
5	4	<b>SUCH A DUDE</b> Courtney Bellamy	8	62.9 400m	0:11.65 400m	0:35.37 [12] (0:11.78)	0:23.59 [11] (0:11.65)	0:11.94 [9] (0:11.94)	5.4L	0:35.37 +9	
6	7	<b>BETTER BELIEVE IT</b> Georgina Cartwright	12	64.5 Overall	0:11.95 1800m	0:36.61 [1] (0:12.03)	0:24.58 [1] (0:12.02)	0:12.56 [2] (0:12.56)	5.44L	0:36.61 -6	
7	9	<b>MISS DYNAMO</b> Cody Collis	5	62.3 400m	0:11.74 400m	0:35.85 [7] (0:12.09)	0:23.76 [8] (0:11.74)	0:12.02 [8] (0:12.02)	5.53L	0:35.85 -1	
8	8	<b>CAESAR CAKE</b> Jake Bayliss	10	64.5 400m	0:11.56 400m	0:35.51 [11] (0:11.89)	0:23.62 [12] (0:11.56)	0:12.06 [7] (0:12.06)	5.67L	0:35.51 +7	
9	6	<b>TRUSTY BANDIT</b> Chris Meehan	6	63.1 400m	0:11.72 400m	0:35.95 [9] (0:11.85)	0:24.10 [7] (0:11.72)	0:12.38 [5] (0:12.38)	6.9L	0:35.95 +1	
10	5	<b>ZALATORIS</b> Jason Taylor	11	64.6 Overall	0:12.16 600m	0:37.46 [3] (0:12.16)	0:25.30 [3] (0:12.23)	0:13.07 [10] (0:13.07)	12.31L	0:37.46 +9	

Scratched: Snippet Bobbins (#3), Justanother Hungee (#13)

Report Created: Mon 27 January 2025 14:23 GMT+ (Note: Timing is based on position data)

Page 3/16

[ ] Ranking at each section and finish  
 -:-:- No data available at this section  
 NA No data available

SCN Saddle cloth number  
 DNF Did not finish  
 DNT Did not track

data processed by  TRIPLESDATA



# Doomben QLD Professional

## Race 1: BECOME A BRC MEMBER Maiden Plate - 2040m

27 January 2025 - 13:36



BRISBANE  
RACING CLUB

Track Rating: Good 4, Weather: Overcast, Rail Position: +7m Entire

Section		600m	400m	200m				Last 600m		
Field Times		0:35.68 (0:12.03)	0:23.65 (0:11.78)	0:11.87 (0:11.87)				0:35.68		
Rank	TAB Horse/Jockey	Barrier	Top Speed [km/h]	Fastest Section	Margin			Distance Travelled [m]		
11	1 BARGARA BOUND Michael Rodd	7	61.1 Overall	0:12.26 400m	0:37.50 [5] (0:12.40)	0:25.10 [10] (0:12.26)	0:12.84 [12] (0:12.84)	14.06L	0:37.50	+4
12	10 SACRED SHIKOBA Wayne O'Connell	3	62.8 Overall	0:12.09 600m	0:38.61 [4] (0:12.09)	0:26.52 [4] (0:12.50)	0:14.02 [11] (0:14.02)	20.04L	0:38.61	+2

Scratched: Snippet Bobbins (#3), Justanother Hungee (#13)

[ ] Ranking at each section and finish  
 -:-:-:- No data available at this section  
 NA No data available

SCN Saddle cloth number  
 DNF Did not finish  
 DNT Did not track



Horse/Jockey Name	Alecia
Final Rank	1
Fastest Section Time (Section)	0:11.72 (400m)
Top Speed [km/h] (Section)	63.5 (Overall)
Race State	Finished



Doomben QLD Professional

Race 1: BECOME A BRC MEMBER Maiden Plate - 2040m

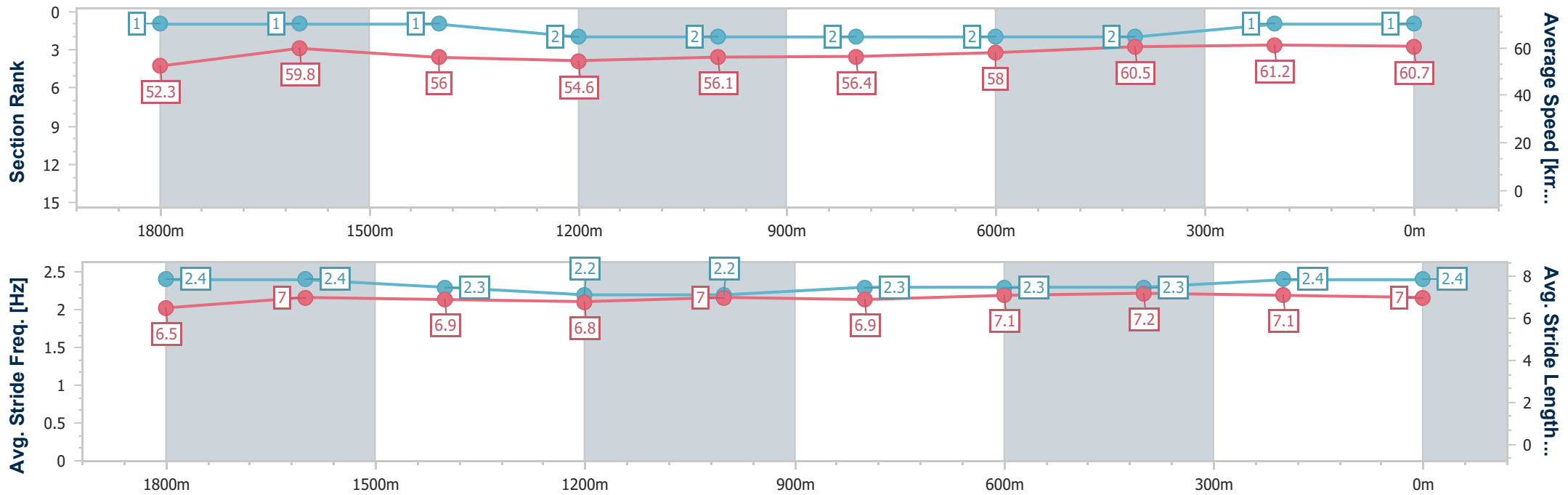
27 January 2025 - 13:36

Track Rating: Good 4, Weather: Overcast, Rail Position: +7m Entire



BRISBANE RACING CLUB

Section	Overall	1800m	1600m	1400m	1200m	1000m	800m	600m	400m	200m
Section Times	2:07.74 [1] (0:16.57)	1:51.17 [1] (0:11.74)	1:39.43 [1] (0:12.78)	1:26.65 [1] (0:13.21)	1:13.44 [2] (0:12.84)	1:00.60 [2] (0:12.76)	0:47.84 [2] (0:12.42)	0:35.42 [2] (0:11.83)	0:23.59 [2] (0:11.72)	0:11.87 [1] (0:11.87)
Average Speed [km/h]	52.3	59.8	56.0	54.6	56.1	56.4	58.0	60.5	61.2	60.7
Top Speed [km/h]	63.5	63.2	57.8	55.6	56.7	57.2	59.6	61.2	62.9	62.9
Avg. Dist. to Rail [m]	3.7	3.5	1.7	0.5	0.4	0.4	0.2	1.0	1.1	1.7
Avg. Stride Freq. [Hz]	2.4	2.4	2.3	2.2	2.2	2.3	2.3	2.3	2.4	2.4
Avg. Stride Length [m]	6.5	7.0	6.9	6.8	7.0	6.9	7.1	7.2	7.1	7.0



- [ ] Ranking at each section and finish
- .-.- No data available at this section
- NA No data available



Horse/Jockey Name	Brief Spirit
Final Rank	2
Fastest Section Time (Section)	0:11.61 (400m)
Top Speed [km/h] (Section)	63.4 (200m)
Race State	Finished



Doomben QLD Professional

Race 1: BECOME A BRC MEMBER Maiden Plate - 2040m

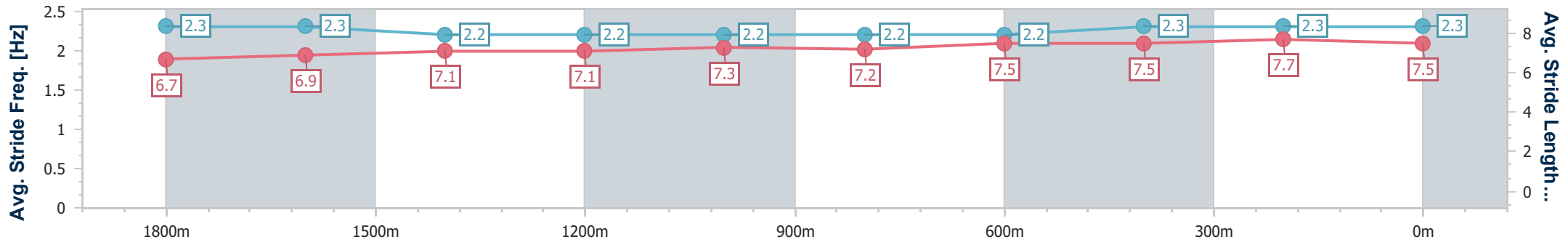
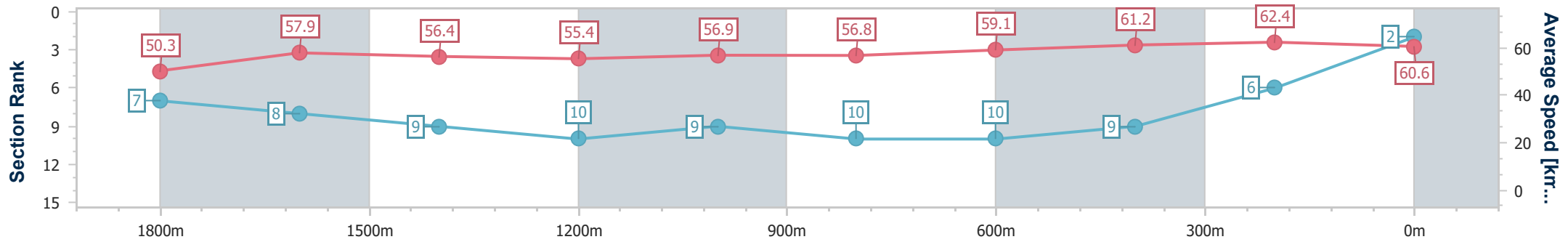
27 January 2025 - 13:36

Track Rating: Good 4, Weather: Overcast, Rail Position: +7m Entire



BRISBANE RACING CLUB

Section	Overall	1800m	1600m	1400m	1200m	1000m	800m	600m	400m	200m
Section Times	2:08.40 [2] (0:17.19)	1:51.21 [7] (0:12.34)	1:38.87 [8] (0:12.78)	1:26.09 [9] (0:13.11)	1:12.98 [10] (0:12.64)	1:00.34 [9] (0:12.75)	0:47.59 [10] (0:12.29)	0:35.30 [10] (0:11.83)	0:23.47 [9] (0:11.61)	0:11.86 [6] (0:11.86)
Average Speed [km/h]	50.3	57.9	56.4	55.4	56.9	56.8	59.1	61.2	62.4	60.6
Top Speed [km/h]	60.9	59.9	57.2	56.4	57.4	58.0	61.6	61.7	63.3	63.4
Avg. Dist. to Rail [m]	1.5	1.0	0.6	1.6	2.0	2.0	1.7	1.1	4.2	4.9
Avg. Stride Freq. [Hz]	2.3	2.3	2.2	2.2	2.2	2.2	2.2	2.3	2.3	2.3
Avg. Stride Length [m]	6.7	6.9	7.1	7.1	7.3	7.2	7.5	7.5	7.7	7.5



- [ ] Ranking at each section and finish
- .-.- No data available at this section
- NA No data available



Horse/Jockey Name	Wimoweh
Final Rank	3
Fastest Section Time (Section)	0:11.55 (400m)
Top Speed [km/h] (Section)	63.0 (400m)
Race State	Finished



Doomben QLD Professional

Race 1: BECOME A BRC MEMBER Maiden Plate - 2040m

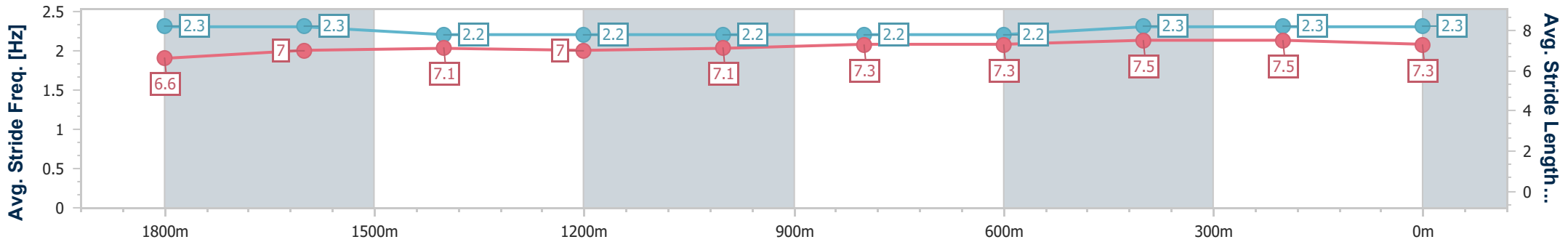
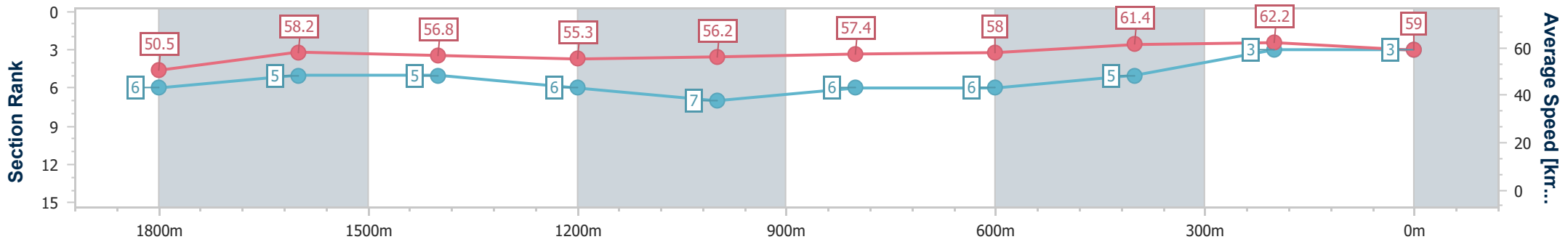
27 January 2025 - 13:36

Track Rating: Good 4, Weather: Overcast, Rail Position: +7m Entire



BRISBANE RACING CLUB

Section	Overall	1800m	1600m	1400m	1200m	1000m	800m	600m	400m	200m
Section Times	2:08.41 [3] (0:17.10)	1:51.31 [6] (0:12.26)	1:39.05 [5] (0:12.61)	1:26.44 [5] (0:13.05)	1:13.39 [6] (0:12.82)	1:00.57 [7] (0:12.57)	0:48.00 [6] (0:12.41)	0:35.59 [6] (0:11.82)	0:23.77 [5] (0:11.55)	0:12.22 [3] (0:12.22)
Average Speed [km/h]	50.5	58.2	56.8	55.3	56.2	57.4	58.0	61.4	62.2	59.0
Top Speed [km/h]	60.6	60.4	57.8	57.0	57.0	57.9	60.3	61.7	63.0	61.7
Avg. Dist. to Rail [m]	2.8	1.9	1.6	1.0	1.1	0.4	0.6	1.3	0.7	1.0
Avg. Stride Freq. [Hz]	2.3	2.3	2.2	2.2	2.2	2.2	2.2	2.3	2.3	2.3
Avg. Stride Length [m]	6.6	7.0	7.1	7.0	7.1	7.3	7.3	7.5	7.5	7.3



- [ ] Ranking at each section and finish
- .-.- No data available at this section
- NA No data available



Horse/Jockey Name	Zonto Wilberforce
Final Rank	4
Fastest Section Time (Section)	0:11.62 (400m)
Top Speed [km/h] (Section)	62.9 (400m)
Race State	Finished



Doomben QLD Professional

Race 1: BECOME A BRC MEMBER Maiden Plate - 2040m

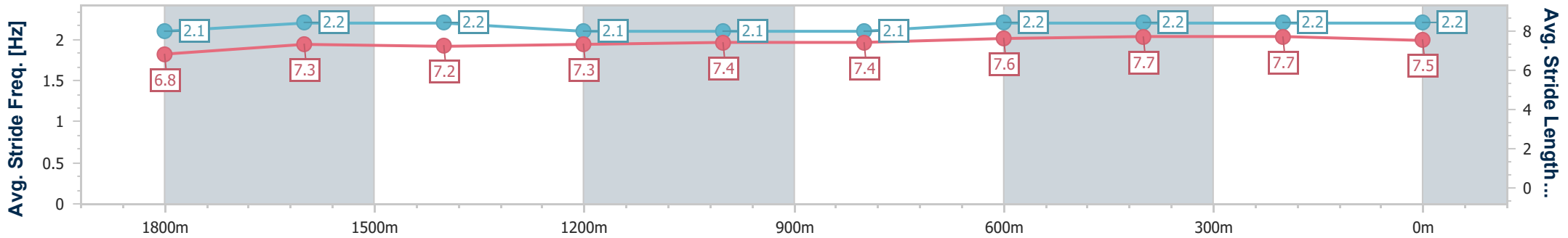
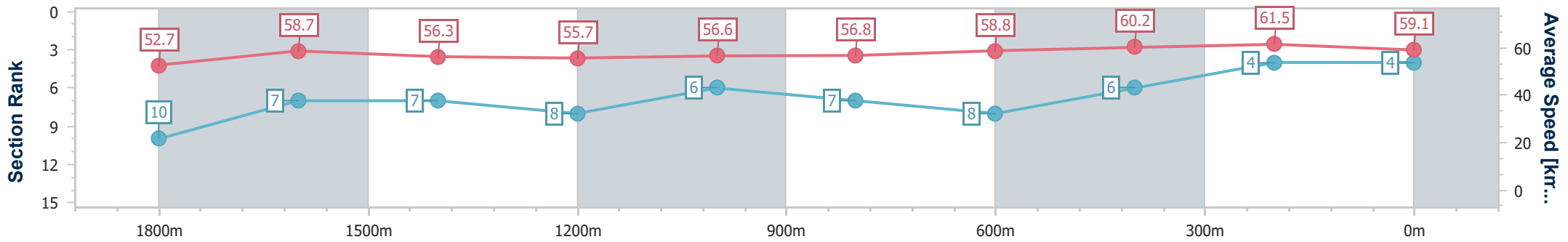
27 January 2025 - 13:36

Track Rating: Good 4, Weather: Overcast, Rail Position: +7m Entire



BRISBANE RACING CLUB

Section	Overall	1800m	1600m	1400m	1200m	1000m	800m	600m	400m	200m
Section Times	2:08.61 [4] (0:17.53)	1:51.08 [10] (0:11.99)	1:39.09 [7] (0:12.63)	1:26.46 [7] (0:12.96)	1:13.50 [8] (0:12.70)	1:00.80 [6] (0:12.71)	0:48.09 [7] (0:12.34)	0:35.75 [8] (0:11.85)	0:23.90 [6] (0:11.62)	0:12.28 [4] (0:12.28)
Average Speed [km/h]	52.7	58.7	56.3	55.7	56.6	56.8	58.8	60.2	61.5	59.1
Top Speed [km/h]	59.9	60.8	59.0	57.1	57.4	57.6	59.5	61.5	62.9	62.7
Avg. Dist. to Rail [m]	2.0	3.0	1.9	0.8	2.2	2.6	2.3	0.5	0.8	1.1
Avg. Stride Freq. [Hz]	2.1	2.2	2.2	2.1	2.1	2.1	2.2	2.2	2.2	2.2
Avg. Stride Length [m]	6.8	7.3	7.2	7.3	7.4	7.4	7.6	7.7	7.7	7.5



- [ ] Ranking at each section and finish
- .-.- No data available at this section
- NA No data available





Horse/Jockey Name	Such A Dude
Final Rank	5
Fastest Section Time (Section)	0:11.65 (400m)
Top Speed [km/h] (Section)	62.9 (400m)
Race State	Finished



Doomben QLD Professional

Race 1: BECOME A BRC MEMBER Maiden Plate - 2040m

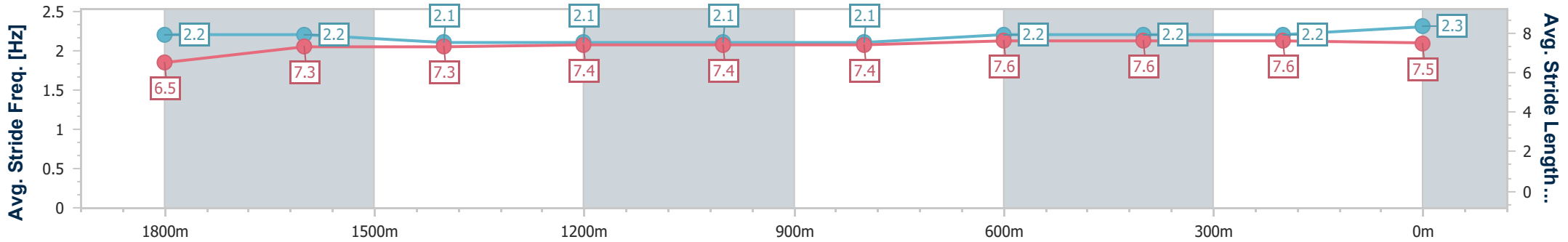
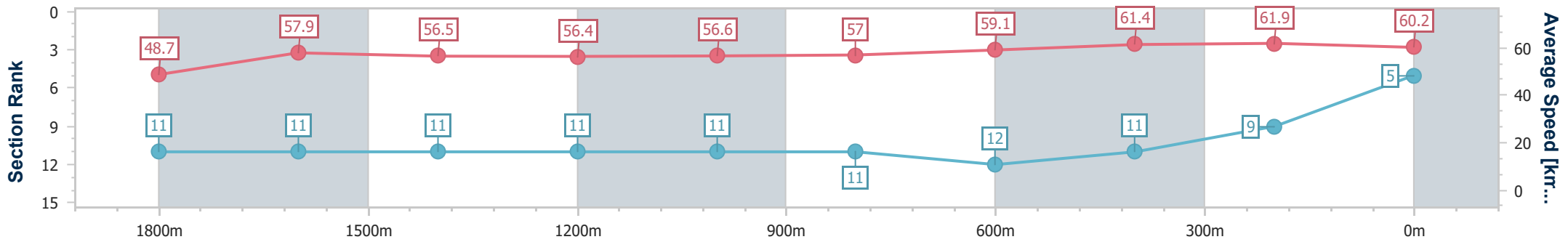
27 January 2025 - 13:36

Track Rating: Good 4, Weather: Overcast, Rail Position: +7m Entire



BRISBANE RACING CLUB

Section	Overall	1800m	1600m	1400m	1200m	1000m	800m	600m	400m	200m
Section Times	2:08.66 [5] (0:17.71)	1:50.95 [11] (0:12.31)	1:38.64 [11] (0:12.71)	1:25.93 [11] (0:12.85)	1:13.08 [11] (0:12.73)	1:00.35 [11] (0:12.69)	0:47.66 [11] (0:12.29)	0:35.37 [12] (0:11.78)	0:23.59 [11] (0:11.65)	0:11.94 [9] (0:11.94)
Average Speed [km/h]	48.7	57.9	56.5	56.4	56.6	57.0	59.1	61.4	61.9	60.2
Top Speed [km/h]	61.1	58.7	57.3	57.4	57.9	58.3	61.2	62.7	62.9	61.5
Avg. Dist. to Rail [m]	2.7	2.1	0.5	1.0	1.2	1.5	1.9	0.7	1.8	1.6
Avg. Stride Freq. [Hz]	2.2	2.2	2.1	2.1	2.1	2.1	2.2	2.2	2.2	2.3
Avg. Stride Length [m]	6.5	7.3	7.3	7.4	7.4	7.4	7.6	7.6	7.6	7.5



- [ ] Ranking at each section and finish
- .-.- No data available at this section
- NA No data available



Horse/Jockey Name	Better Believe It
Final Rank	6
Fastest Section Time (Section)	0:11.95 (1800m)
Top Speed [km/h] (Section)	64.5 (Overall)
Race State	Finished



Doomben QLD Professional

Race 1: BECOME A BRC MEMBER Maiden Plate - 2040m

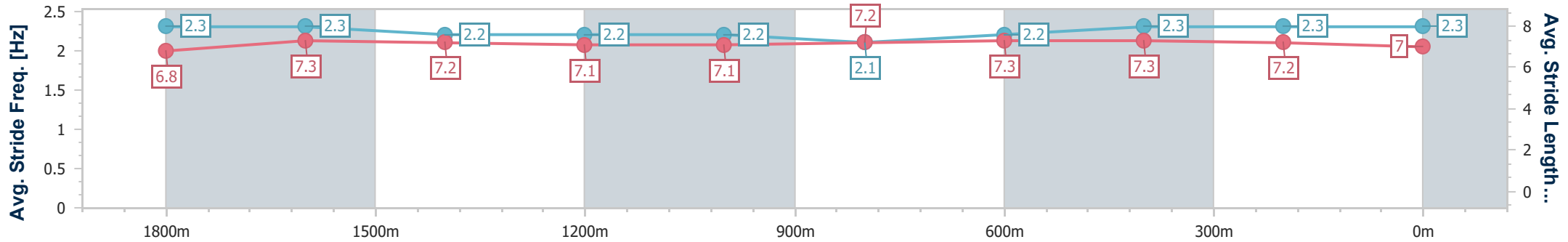
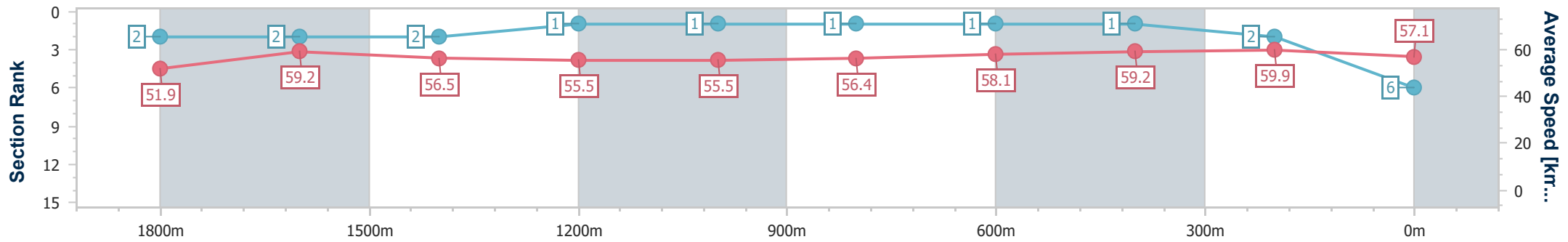
27 January 2025 - 13:36

Track Rating: Good 4, Weather: Overcast, Rail Position: +7m Entire



BRISBANE RACING CLUB

Section	Overall	1800m	1600m	1400m	1200m	1000m	800m	600m	400m	200m
Section Times	2:08.67 [6] (0:16.69)	1:51.98 [2] (0:11.95)	1:40.03 [2] (0:12.51)	1:27.52 [2] (0:12.86)	1:14.66 [1] (0:12.96)	1:01.70 [1] (0:12.72)	0:48.98 [1] (0:12.37)	0:36.61 [1] (0:12.03)	0:24.58 [1] (0:12.02)	0:12.56 [2] (0:12.56)
Average Speed [km/h]	51.9	59.2	56.5	55.5	55.5	56.4	58.1	59.2	59.9	57.1
Top Speed [km/h]	64.5	62.8	57.4	56.8	56.1	57.6	59.6	59.9	60.6	59.3
Avg. Dist. to Rail [m]	6.5	2.7	4.4	2.0	0.3	1.0	0.7	1.4	1.6	3.3
Avg. Stride Freq. [Hz]	2.3	2.3	2.2	2.2	2.2	2.1	2.2	2.3	2.3	2.3
Avg. Stride Length [m]	6.8	7.3	7.2	7.1	7.1	7.2	7.3	7.3	7.2	7.0



- [ ] Ranking at each section and finish
- .-.- No data available at this section
- NA No data available



Horse/Jockey Name	Miss Dynamo
Final Rank	7
Fastest Section Time (Section)	0:11.74 (400m)
Top Speed [km/h] (Section)	62.3 (400m)
Race State	Finished



Doomben QLD Professional

Race 1: BECOME A BRC MEMBER Maiden Plate - 2040m

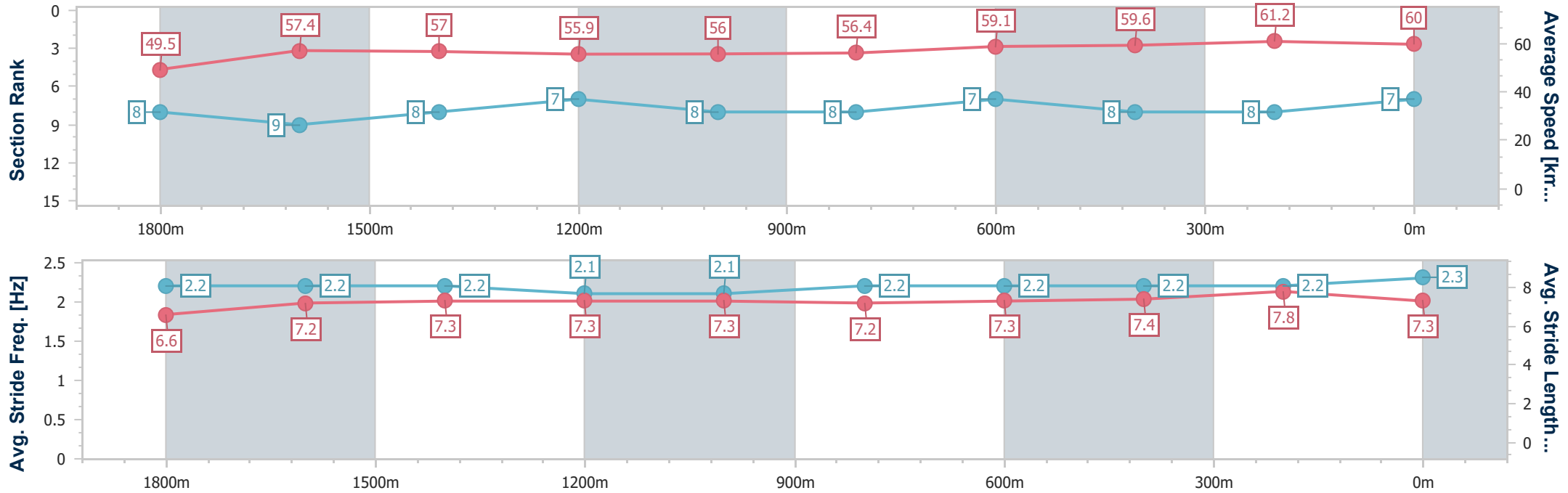
27 January 2025 - 13:36

Track Rating: Good 4, Weather: Overcast, Rail Position: +7m Entire



BRISBANE RACING CLUB

Section	Overall	1800m	1600m	1400m	1200m	1000m	800m	600m	400m	200m
Section Times	2:08.68 [7] (0:17.49)	1:51.19 [8] (0:12.27)	1:38.92 [9] (0:12.49)	1:26.43 [8] (0:12.79)	1:13.64 [7] (0:12.86)	1:00.78 [8] (0:12.80)	0:47.98 [8] (0:12.13)	0:35.85 [7] (0:12.09)	0:23.76 [8] (0:11.74)	0:12.02 [8] (0:12.02)
Average Speed [km/h]	49.5	57.4	57.0	55.9	56.0	56.4	59.1	59.6	61.2	60.0
Top Speed [km/h]	60.6	58.0	58.0	56.5	56.4	57.9	59.9	60.5	62.3	61.9
Avg. Dist. to Rail [m]	1.8	3.3	3.4	1.3	0.7	1.1	0.4	0.4	2.8	7.0
Avg. Stride Freq. [Hz]	2.2	2.2	2.2	2.1	2.1	2.2	2.2	2.2	2.2	2.3
Avg. Stride Length [m]	6.6	7.2	7.3	7.3	7.3	7.2	7.3	7.4	7.8	7.3



- [ ] Ranking at each section and finish
- .-.- No data available at this section
- NA No data available



Horse/Jockey Name	Caesar Cake
Final Rank	8
Fastest Section Time (Section)	0:11.56 (400m)
Top Speed [km/h] (Section)	64.5 (400m)
Race State	Finished



Doomben QLD Professional

Race 1: BECOME A BRC MEMBER Maiden Plate - 2040m

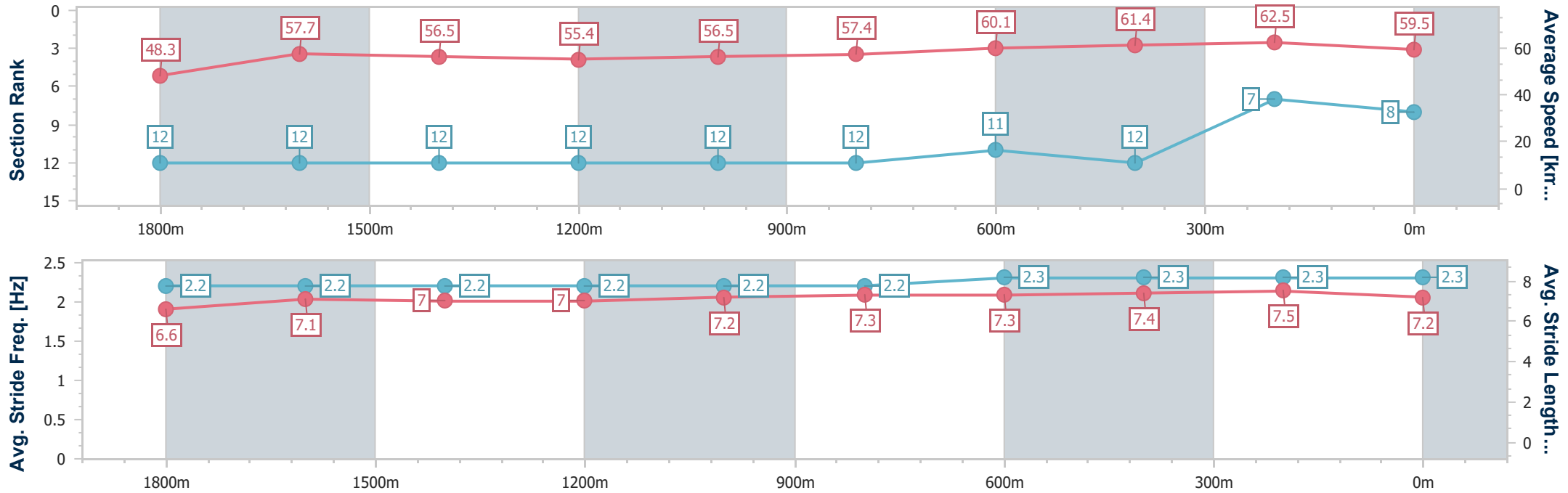
27 January 2025 - 13:36

Track Rating: Good 4, Weather: Overcast, Rail Position: +7m Entire



BRISBANE RACING CLUB

Section	Overall	1800m	1600m	1400m	1200m	1000m	800m	600m	400m	200m
Section Times	2:08.71 [8] (0:17.91)	1:50.80 [12] (0:12.26)	1:38.54 [12] (0:12.61)	1:25.93 [12] (0:13.01)	1:12.92 [12] (0:12.73)	1:00.19 [12] (0:12.61)	0:47.58 [12] (0:12.07)	0:35.51 [11] (0:11.89)	0:23.62 [12] (0:11.56)	0:12.06 [7] (0:12.06)
Average Speed [km/h]	48.3	57.7	56.5	55.4	56.5	57.4	60.1	61.4	62.5	59.5
Top Speed [km/h]	60.3	59.5	57.2	56.4	57.7	58.6	62.3	62.4	64.5	62.0
Avg. Dist. to Rail [m]	3.5	3.0	1.8	0.4	1.0	1.4	2.5	1.9	3.0	5.4
Avg. Stride Freq. [Hz]	2.2	2.2	2.2	2.2	2.2	2.2	2.3	2.3	2.3	2.3
Avg. Stride Length [m]	6.6	7.1	7.0	7.0	7.2	7.3	7.3	7.4	7.5	7.2



- [ ] Ranking at each section and finish
- .-.- No data available at this section
- NA No data available



Horse/Jockey Name	Trusty Bandit
Final Rank	9
Fastest Section Time (Section)	0:11.72 (400m)
Top Speed [km/h] (Section)	63.1 (400m)
Race State	Finished



Doomben QLD Professional

Race 1: BECOME A BRC MEMBER Maiden Plate - 2040m

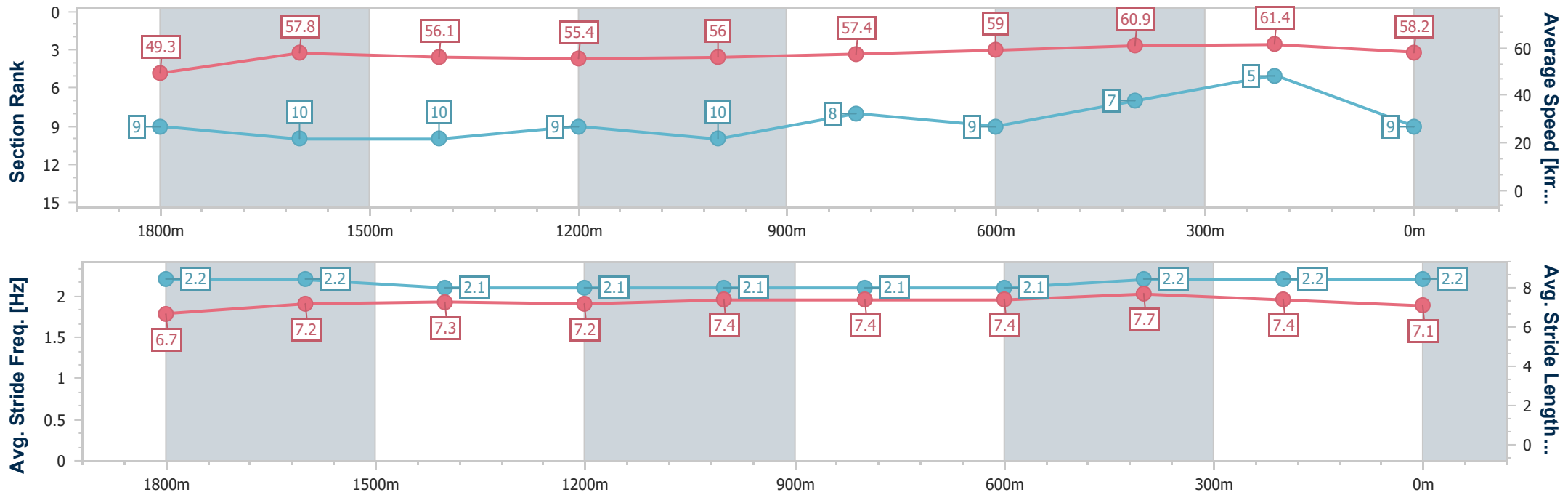
27 January 2025 - 13:36

Track Rating: Good 4, Weather: Overcast, Rail Position: +7m Entire



BRISBANE RACING CLUB

Section	Overall	1800m	1600m	1400m	1200m	1000m	800m	600m	400m	200m
Section Times	2:08.91 [9] (0:17.51)	1:51.40 [9] (0:12.29)	1:39.11 [10] (0:12.69)	1:26.42 [10] (0:12.83)	1:13.59 [9] (0:12.81)	1:00.78 [10] (0:12.57)	0:48.21 [8] (0:12.26)	0:35.95 [9] (0:11.85)	0:24.10 [7] (0:11.72)	0:12.38 [5] (0:12.38)
Average Speed [km/h]	49.3	57.8	56.1	55.4	56.0	57.4	59.0	60.9	61.4	58.2
Top Speed [km/h]	61.3	59.7	57.4	56.5	57.9	58.9	61.0	61.7	63.1	62.3
Avg. Dist. to Rail [m]	2.3	2.0	3.2	2.4	1.2	0.4	1.5	0.9	0.9	1.1
Avg. Stride Freq. [Hz]	2.2	2.2	2.1	2.1	2.1	2.1	2.1	2.2	2.2	2.2
Avg. Stride Length [m]	6.7	7.2	7.3	7.2	7.4	7.4	7.4	7.7	7.4	7.1



- [ ] Ranking at each section and finish
- .-.- No data available at this section
- NA No data available



Horse/Jockey Name	Zalatoris
Final Rank	10
Fastest Section Time (Section)	0:12.16 (600m)
Top Speed [km/h] (Section)	64.6 (Overall)
Race State	Finished



Doomben QLD Professional

Race 1: BECOME A BRC MEMBER Maiden Plate - 2040m

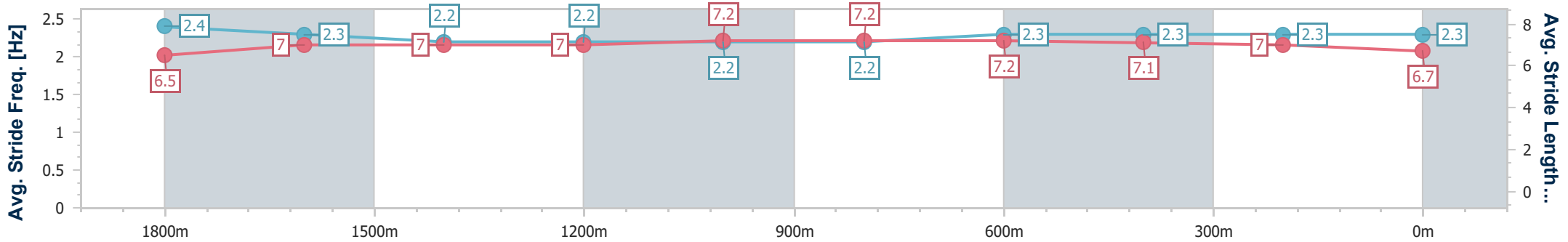
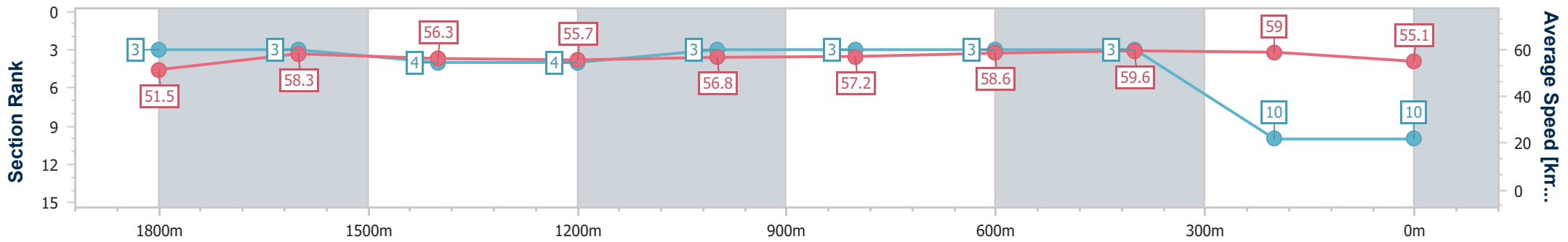
27 January 2025 - 13:36

Track Rating: Good 4, Weather: Overcast, Rail Position: +7m Entire



BRISBANE RACING CLUB

Section	Overall	1800m	1600m	1400m	1200m	1000m	800m	600m	400m	200m
Section Times	2:09.83 [10] (0:16.76)	1:53.07 [3] (0:12.22)	1:40.85 [3] (0:12.74)	1:28.11 [4] (0:12.90)	1:15.21 [4] (0:12.64)	1:02.57 [3] (0:12.68)	0:49.89 [3] (0:12.43)	0:37.46 [3] (0:12.16)	0:25.30 [3] (0:12.23)	0:13.07 [10] (0:13.07)
Average Speed [km/h]	51.5	58.3	56.3	55.7	56.8	57.2	58.6	59.6	59.0	55.1
Top Speed [km/h]	64.6	62.2	56.7	56.6	57.4	57.6	59.7	60.1	59.5	58.1
Avg. Dist. to Rail [m]	4.3	1.5	1.3	0.6	1.2	1.9	2.7	1.5	1.0	2.0
Avg. Stride Freq. [Hz]	2.4	2.3	2.2	2.2	2.2	2.2	2.3	2.3	2.3	2.3
Avg. Stride Length [m]	6.5	7.0	7.0	7.0	7.2	7.2	7.2	7.1	7.0	6.7



- [ ] Ranking at each section and finish
- .-.- No data available at this section
- NA No data available



Horse/Jockey Name	Bargara Bound
Final Rank	11
Fastest Section Time (Section)	0:12.26 (400m)
Top Speed [km/h] (Section)	61.1 (Overall)
Race State	Finished



Doomben QLD Professional

Race 1: BECOME A BRC MEMBER Maiden Plate - 2040m

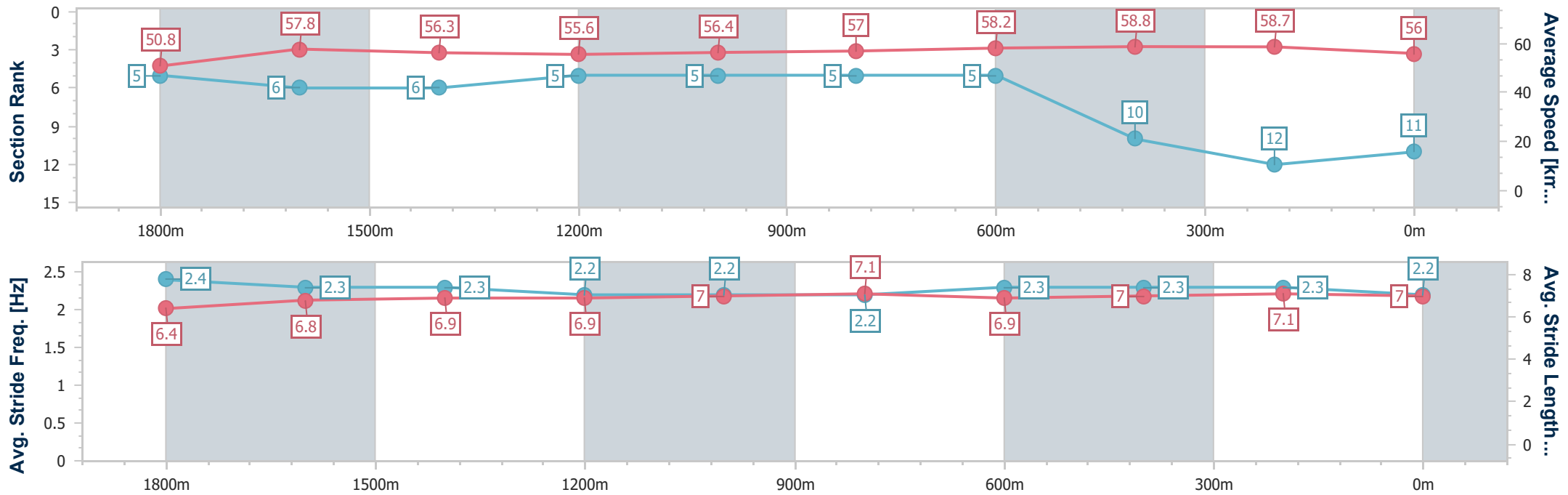
27 January 2025 - 13:36

Track Rating: Good 4, Weather: Overcast, Rail Position: +7m Entire



BRISBANE RACING CLUB

Section	Overall	1800m	1600m	1400m	1200m	1000m	800m	600m	400m	200m
Section Times	2:10.13 [11] (0:17.07)	1:53.06 [5] (0:12.37)	1:40.69 [6] (0:12.65)	1:28.04 [6] (0:12.73)	1:15.31 [5] (0:12.73)	1:02.58 [5] (0:12.63)	0:49.95 [5] (0:12.45)	0:37.50 [5] (0:12.40)	0:25.10 [10] (0:12.26)	0:12.84 [12] (0:12.84)
Average Speed [km/h]	50.8	57.8	56.3	55.6	56.4	57.0	58.2	58.8	58.7	56.0
Top Speed [km/h]	61.1	60.2	57.1	56.4	57.1	58.2	59.5	59.2	59.5	59.2
Avg. Dist. to Rail [m]	1.9	0.9	2.8	2.8	1.7	0.9	1.8	2.3	0.7	0.6
Avg. Stride Freq. [Hz]	2.4	2.3	2.3	2.2	2.2	2.2	2.3	2.3	2.3	2.2
Avg. Stride Length [m]	6.4	6.8	6.9	6.9	7.0	7.1	6.9	7.0	7.1	7.0



- [ ] Ranking at each section and finish
- .-.- No data available at this section
- NA No data available



Horse/Jockey Name	Sacred Shikoba
Final Rank	12
Fastest Section Time (Section)	0:12.09 (600m)
Top Speed [km/h] (Section)	62.8 (Overall)
Race State	Finished



Doomben QLD Professional

Race 1: BECOME A BRC MEMBER Maiden Plate - 2040m

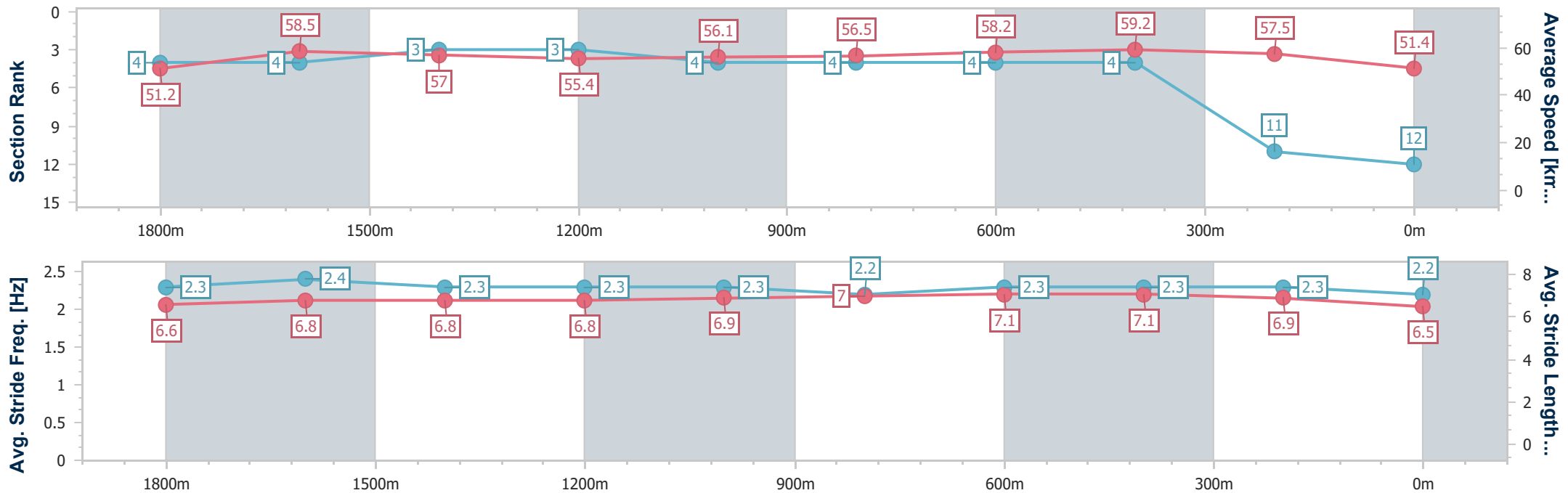
27 January 2025 - 13:36

Track Rating: Good 4, Weather: Overcast, Rail Position: +7m Entire



BRISBANE RACING CLUB

Section	Overall	1800m	1600m	1400m	1200m	1000m	800m	600m	400m	200m
Section Times	2:11.15 [12] (0:16.90)	1:54.25 [4] (0:12.10)	1:42.15 [4] (0:12.58)	1:29.57 [3] (0:13.01)	1:16.56 [3] (0:12.81)	1:03.75 [4] (0:12.73)	0:51.02 [4] (0:12.41)	0:38.61 [4] (0:12.09)	0:26.52 [4] (0:12.50)	0:14.02 [11] (0:14.02)
Average Speed [km/h]	51.2	58.5	57.0	55.4	56.1	56.5	58.2	59.2	57.5	51.4
Top Speed [km/h]	62.8	62.4	57.8	56.1	57.1	57.9	59.5	59.7	58.6	55.5
Avg. Dist. to Rail [m]	1.9	3.0	1.3	0.4	0.3	0.4	0.1	0.8	0.6	0.2
Avg. Stride Freq. [Hz]	2.3	2.4	2.3	2.3	2.3	2.2	2.3	2.3	2.3	2.2
Avg. Stride Length [m]	6.6	6.8	6.8	6.8	6.9	7.0	7.1	7.1	6.9	6.5



- [ ] Ranking at each section and finish
- .-.- No data available at this section
- NA No data available