



# Sunshine Coast QLD Professional

## Race 1: WIMMERS PREMIUM SOFT DRINKS Maiden Plate - 2200m

03 September 2023 - 12:25



Track Rating: Good 4, Weather: Fine, Rail Position: +9m Entire

Section		Overall	2000m	1800m	1600m	1400m	1200m	1000m	Last 600m					
Field Times		2:24.61 (0:16.92)	2:07.69 (0:12.15)	1:55.54 (0:12.73)	1:42.81 (0:12.50)	1:30.31 (0:13.29)	1:17.02 (0:13.94)	1:03.08 (0:13.80)	0:36.11					
Rank	TAB	Horse/Jockey	Barrier	Top Speed [km/h]	Fastest Section								Distance Travelled [m]	
1	2	<b>PRESSFAL</b> Michael Cahill	1	62.5 400m	0:11.62 400m	2:24.61 [1] (0:17.37)	2:07.24 [7] (0:12.35)	1:54.89 [7] (0:13.02)	1:41.87 [7] (0:12.53)	1:29.34 [7] (0:13.22)	1:16.12 [7] (0:14.04)	1:02.08 [7] (0:13.63)	0:35.75	
2	8	<b>BROOKLYN DASH</b> Cejay Graham	2	63.5 400m	0:11.54 400m	2:24.73 [2] (0:17.12)	2:07.61 [4] (0:12.22)	1:55.39 [4] (0:13.01)	1:42.38 [5] (0:12.59)	1:29.79 [5] (0:13.25)	1:16.54 [5] (0:14.01)	1:02.53 [5] (0:13.73)	0:35.74	-7
3	10	<b>LADY MATILDA</b> Georgina Cartwright	4	62.4 600m	0:11.90 600m	2:24.87 [3] (0:17.11)	2:07.76 [3] (0:12.31)	1:55.45 [5] (0:12.86)	1:42.59 [4] (0:12.59)	1:30.00 [4] (0:13.16)	1:16.84 [4] (0:13.96)	1:02.88 [4] (0:13.72)	0:36.23	-1
4	9	<b>HUKA</b> Bailey Wheeler	10	62.3 400m	0:11.82 400m	2:24.98 [4] (0:17.50)	2:07.48 [8] (0:12.43)	1:55.05 [8] (0:12.94)	1:42.11 [8] (0:12.54)	1:29.57 [8] (0:13.15)	1:16.42 [8] (0:13.99)	1:02.43 [8] (0:13.37)	0:36.42	+2
5	3	<b>ROYAL GEORGE</b> Melea Castle	11	62.4 Overall	0:11.95 400m	2:25.24 [5] (0:17.01)	2:08.23 [2] (0:12.13)	1:56.10 [2] (0:12.89)	1:43.21 [3] (0:12.55)	1:30.66 [3] (0:13.33)	1:17.33 [3] (0:13.97)	1:03.36 [3] (0:13.71)	0:36.47	-4
6	11	<b>SUPER SWEET</b> Rikki Jamieson	5	62.2 Overall	0:12.00 400m	2:25.53 [6] (0:16.92)	2:08.61 [1] (0:12.15)	1:56.46 [1] (0:12.73)	1:43.73 [1] (0:12.50)	1:31.23 [1] (0:13.29)	1:17.94 [1] (0:13.94)	1:04.00 [1] (0:13.80)	0:37.03	-6
7	1	<b>MEDIEVAL CROWN</b> Micheal Hellyer	3	61.3 400m	0:11.91 400m	2:25.68 [7] (0:17.69)	2:07.99 [9] (0:12.41)	1:55.58 [9] (0:12.83)	1:42.75 [9] (0:12.54)	1:30.21 [9] (0:13.21)	1:17.00 [9] (0:14.02)	1:02.98 [9] (0:13.55)	0:36.65	-3
8	6	<b>SNIPPETY BOBBINS</b> Ben Thompson	9	62.4 2000m	0:12.06 2000m	2:25.99 [8] (0:17.24)	2:08.75 [5] (0:12.06)	1:56.69 [3] (0:12.65)	1:44.04 [2] (0:12.48)	1:31.56 [2] (0:13.31)	1:18.25 [2] (0:13.87)	1:04.38 [2] (0:13.79)	0:37.36	+3
9	5	<b>SET BEAT</b> Luke Tarrant	6	62.2 Overall	0:12.07 400m	2:26.34 [9] (0:17.32)	2:09.02 [6] (0:12.32)	1:56.70 [6] (0:12.93)	1:43.77 [6] (0:12.54)	1:31.23 [6] (0:13.20)	1:18.03 [6] (0:14.02)	1:04.01 [6] (0:13.62)	0:37.43	+0
10	7	<b>TEPPANYAKI</b> Justin Stanley	7	60.5 Overall	0:12.40 600m	2:29.19 [10] (0:17.71)	2:11.48 [10] (0:12.72)	1:58.76 [10] (0:12.95)	1:45.81 [10] (0:12.53)	1:33.28 [10] (0:12.97)	1:20.31 [10] (0:14.01)	1:06.30 [10] (0:13.28)	0:40.25	+3

Scratched: Savvy Stryke (#4)

[ ] Ranking at each section and finish  
 :---: No data available at this section  
 NA No data available

SCN Saddle cloth number  
 DNF Did not finish  
 DNT Did not track



# Sunshine Coast QLD Professional

## Race 1: WIMMERS PREMIUM SOFT DRINKS Maiden Plate - 2200m

03 September 2023 - 12:25



Track Rating: Good 4, Weather: Fine, Rail Position: +9m Entire

Section										Last 600m		
Field Times		800m	600m	400m	200m							
		0:49.28 (0:13.17)	0:36.11 (0:12.04)	0:24.07 (0:11.88)	0:12.19 (0:12.19)							
Rank	TAB	Horse/Jockey	Barrier	Top Speed [km/h]	Fastest Section					Margin	Distance Travelled [m]	
1	2	<b>PRESSFAL</b> Michael Cahill	1	62.5 400m	0:11.62 400m	0:48.45 [8] (0:12.70)	0:35.75 [6] (0:12.01)	0:23.74 [4] (0:11.62)	0:12.12 [3] (0:12.12)	2:24.61	0:35.75	
2	8	<b>BROOKLYN DASH</b> Cejay Graham	2	63.5 400m	0:11.54 400m	0:48.80 [6] (0:13.06)	0:35.74 [9] (0:12.18)	0:23.56 [8] (0:11.54)	0:12.02 [5] (0:12.02)	0.5L	0:35.74	-7
3	10	<b>LADY MATILDA</b> Georgina Cartwright	4	62.4 600m	0:11.90 600m	0:49.16 [4] (0:12.93)	0:36.23 [4] (0:11.90)	0:24.33 [1] (0:11.92)	0:12.41 [2] (0:12.41)	1.3L	0:36.23	-1
4	9	<b>HUKA</b> Bailey Wheeler	10	62.3 400m	0:11.82 400m	0:49.06 [5] (0:12.64)	0:36.42 [2] (0:12.04)	0:24.38 [3] (0:11.82)	0:12.56 [1] (0:12.56)	1.8L	0:36.42	+2
5	3	<b>ROYAL GEORGE</b> Melea Castle	11	62.4 Overall	0:11.95 400m	0:49.65 [3] (0:13.18)	0:36.47 [5] (0:12.17)	0:24.30 [5] (0:11.95)	0:12.35 [6] (0:12.35)	3.3L	0:36.47	-4
6	11	<b>SUPER SWEET</b> Rikki Jamieson	5	62.2 Overall	0:12.00 400m	0:50.20 [1] (0:13.17)	0:37.03 [1] (0:12.07)	0:24.96 [2] (0:12.00)	0:12.96 [4] (0:12.96)	4.8L	0:37.03	-6
7	1	<b>MEDIEVAL CROWN</b> Micheal Hellyer	3	61.3 400m	0:11.91 400m	0:49.43 [10] (0:12.78)	0:36.65 [10] (0:12.30)	0:24.35 [9] (0:11.91)	0:12.44 [9] (0:12.44)	5.6L	0:36.65	-3
8	6	<b>SNIPPETY BOBBINS</b> Ben Thompson	9	62.4 2000m	0:12.06 2000m	0:50.59 [2] (0:13.23)	0:37.36 [3] (0:12.51)	0:24.85 [6] (0:12.07)	0:12.78 [7] (0:12.78)	7.4L	0:37.36	+3
9	5	<b>SET BEAT</b> Luke Tarrant	6	62.2 Overall	0:12.07 400m	0:50.39 [7] (0:12.96)	0:37.43 [7] (0:12.26)	0:25.17 [7] (0:12.07)	0:13.10 [8] (0:13.10)	9.4L	0:37.43	+0
10	7	<b>TEPPANYAKI</b> Justin Stanley	7	60.5 Overall	0:12.40 600m	0:53.02 [9] (0:12.77)	0:40.25 [8] (0:12.40)	0:27.85 [10] (0:12.90)	0:14.95 [10] (0:14.95)	26.2L	0:40.25	+3

Scratched: Savvy Stryke (#4)

[ ] Ranking at each section and finish  
 -:-:- No data available at this section  
 NA No data available

SCN Saddle cloth number  
 DNF Did not finish  
 DNT Did not track



Horse/Jockey Name	Pressfal
Final Rank	1
Fastest Section Time (Section)	0:11.62 (400m)
Top Speed [km/h] (Section)	62.5 (400m)
Race State	Finished



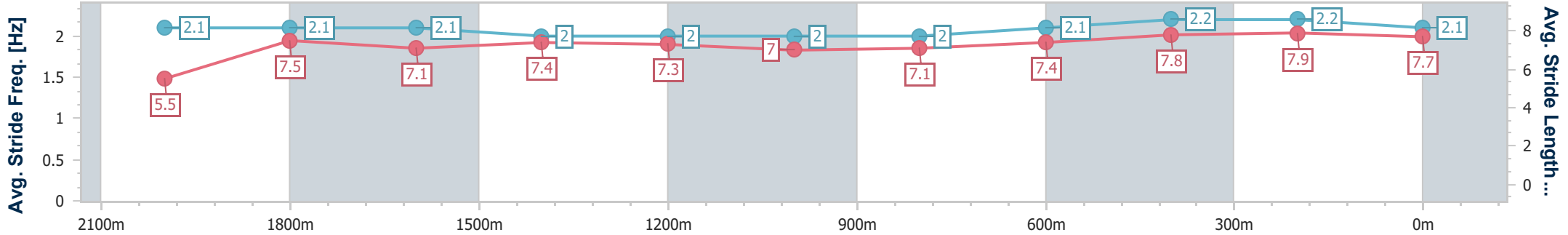
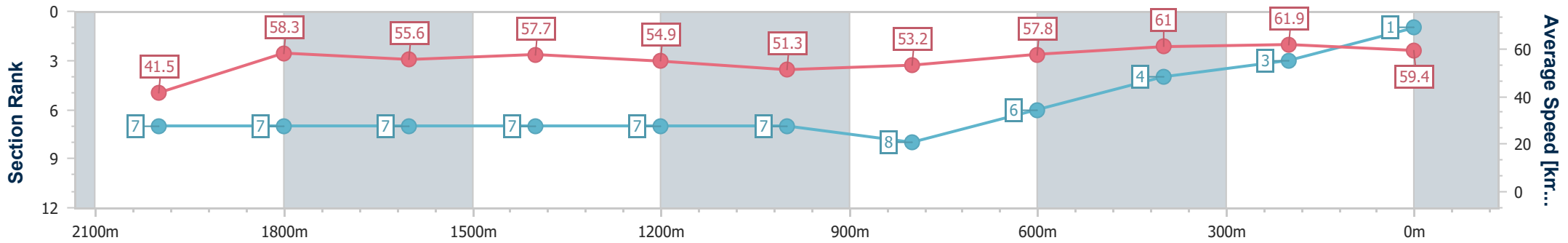
Sunshine Coast QLD Professional  
 Race 1: WIMMERS PREMIUM SOFT DRINKS Maiden Plate - 2200m



03 September 2023 - 12:25

Track Rating: Good 4, Weather: Fine, Rail Position: +9m Entire

Section	Overall	2000m	1800m	1600m	1400m	1200m	1000m	800m	600m	400m	200m
Section Times	2:24.61 [1] (0:17.37)	2:07.24 [7] (0:12.35)	1:54.89 [7] (0:13.02)	1:41.87 [7] (0:12.53)	1:29.34 [7] (0:13.22)	1:16.12 [7] (0:14.04)	1:02.08 [7] (0:13.63)	0:48.45 [8] (0:12.70)	0:35.75 [6] (0:12.01)	0:23.74 [4] (0:11.62)	0:12.12 [3] (0:12.12)
Average Speed [km/h]	41.5	58.3	55.6	57.7	54.9	51.3	53.2	57.8	61.0	61.9	59.4
Top Speed [km/h]	61.7	59.3	57.1	58.7	58.0	52.4	54.9	60.2	61.6	62.5	61.1
Avg. Dist. to Rail [m]	5.9	0.1	1.0	2.1	2.3	2.1	2.3	3.3	2.7	3.9	4.0
Avg. Stride Freq. [Hz]	2.1	2.1	2.1	2.0	2.0	2.0	2.0	2.1	2.2	2.2	2.1
Avg. Stride Length [m]	5.5	7.5	7.1	7.4	7.3	7.0	7.1	7.4	7.8	7.9	7.7



- [ ] Ranking at each section and finish
- .-.- No data available at this section
- NA No data available



Horse/Jockey Name	Brooklyn Dash
Final Rank	2
Fastest Section Time (Section)	0:11.54 (400m)
Top Speed [km/h] (Section)	63.5 (400m)
Race State	Finished



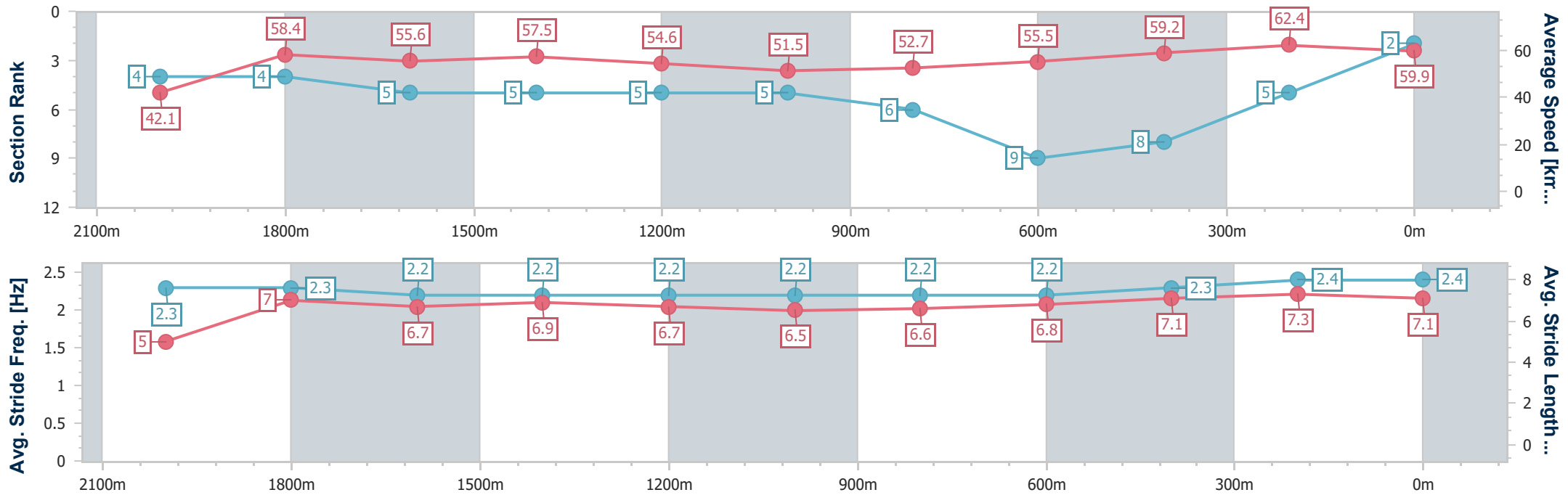
Sunshine Coast QLD Professional  
 Race 1: WIMMERS PREMIUM SOFT DRINKS Maiden Plate - 2200m



03 September 2023 - 12:25

Track Rating: Good 4, Weather: Fine, Rail Position: +9m Entire

Section	Overall	2000m	1800m	1600m	1400m	1200m	1000m	800m	600m	400m	200m
Section Times	2:24.73 [2] (0:17.12)	2:07.61 [4] (0:12.22)	1:55.39 [4] (0:13.01)	1:42.38 [5] (0:12.59)	1:29.79 [5] (0:13.25)	1:16.54 [5] (0:14.01)	1:02.53 [5] (0:13.73)	0:48.80 [6] (0:13.06)	0:35.74 [9] (0:12.18)	0:23.56 [8] (0:11.54)	0:12.02 [5] (0:12.02)
Average Speed [km/h]	42.1	58.4	55.6	57.5	54.6	51.5	52.7	55.5	59.2	62.4	59.9
Top Speed [km/h]	60.8	59.7	56.6	58.2	56.9	53.0	54.7	58.3	61.4	63.5	61.5
Avg. Dist. to Rail [m]	5.8	1.2	0.9	2.0	2.0	2.1	2.0	1.3	0.2	2.1	4.8
Avg. Stride Freq. [Hz]	2.3	2.3	2.2	2.2	2.2	2.2	2.2	2.2	2.3	2.4	2.4
Avg. Stride Length [m]	5.0	7.0	6.7	6.9	6.7	6.5	6.6	6.8	7.1	7.3	7.1



- [ ] Ranking at each section and finish
- .-.- No data available at this section
- NA No data available



Horse/Jockey Name	Lady Matilda
Final Rank	3
Fastest Section Time (Section)	0:11.90 (600m)
Top Speed [km/h] (Section)	62.4 (600m)
Race State	Finished



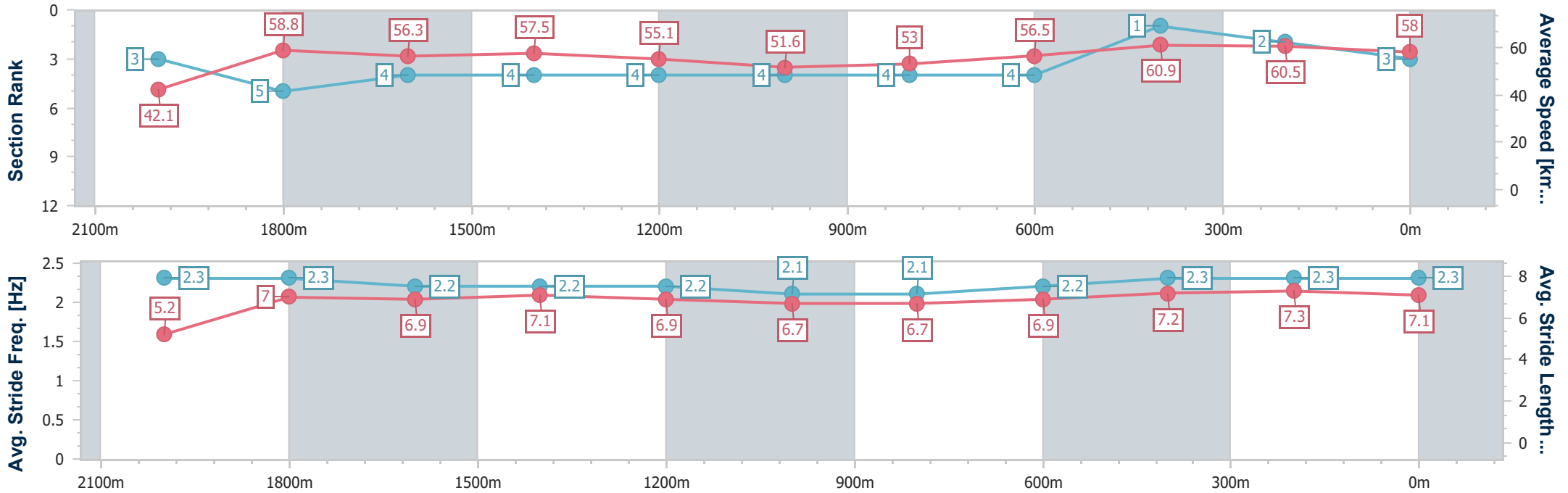
Sunshine Coast QLD Professional  
 Race 1: WIMMERS PREMIUM SOFT DRINKS Maiden Plate - 2200m



03 September 2023 - 12:25

Track Rating: Good 4, Weather: Fine, Rail Position: +9m Entire

Section	Overall	2000m	1800m	1600m	1400m	1200m	1000m	800m	600m	400m	200m
Section Times	2:24.87 [3] (0:17.11)	2:07.76 [3] (0:12.31)	1:55.45 [5] (0:12.86)	1:42.59 [4] (0:12.59)	1:30.00 [4] (0:13.16)	1:16.84 [4] (0:13.96)	1:02.88 [4] (0:13.72)	0:49.16 [4] (0:12.93)	0:36.23 [4] (0:11.90)	0:24.33 [1] (0:11.92)	0:12.41 [2] (0:12.41)
Average Speed [km/h]	42.1	58.8	56.3	57.5	55.1	51.6	53.0	56.5	60.9	60.5	58.0
Top Speed [km/h]	60.6	60.4	56.8	58.3	57.9	52.9	54.5	59.6	62.4	62.0	58.9
Avg. Dist. to Rail [m]	7.5	0.7	1.0	2.1	2.6	3.2	2.9	2.7	1.3	1.1	0.8
Avg. Stride Freq. [Hz]	2.3	2.3	2.2	2.2	2.2	2.1	2.1	2.2	2.3	2.3	2.3
Avg. Stride Length [m]	5.2	7.0	6.9	7.1	6.9	6.7	6.7	6.9	7.2	7.3	7.1



- [ ] Ranking at each section and finish
- .-.- No data available at this section
- NA No data available



Horse/Jockey Name	Huka
Final Rank	4
Fastest Section Time (Section)	0:11.82 (400m)
Top Speed [km/h] (Section)	62.3 (400m)
Race State	Finished



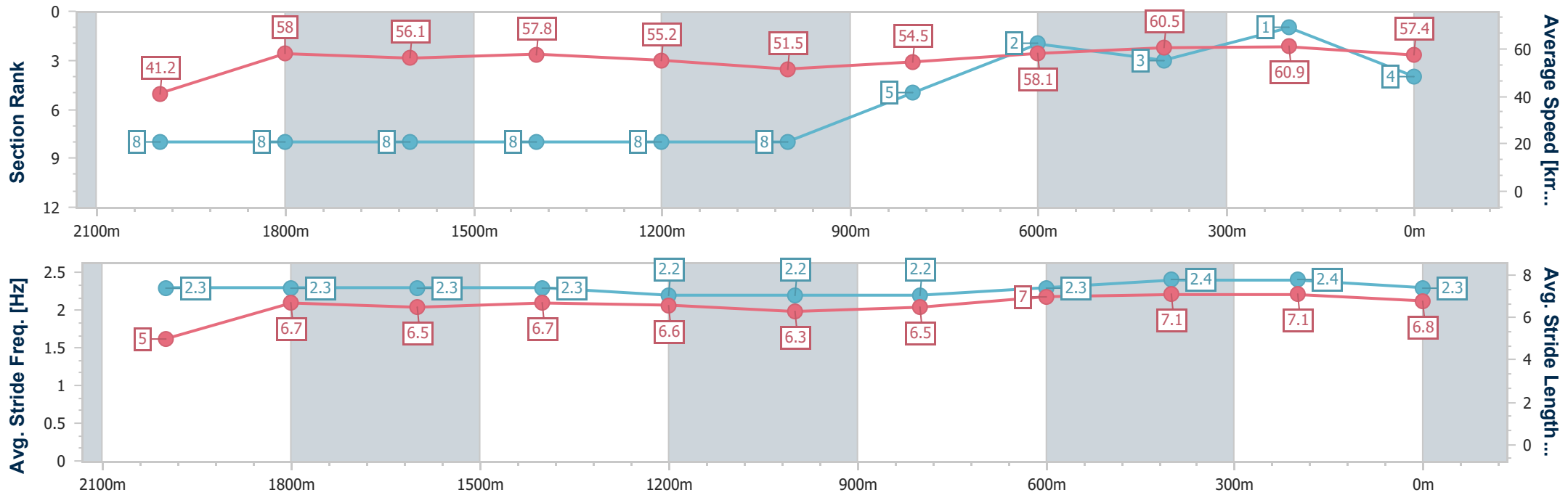
Sunshine Coast QLD Professional  
 Race 1: WIMMERS PREMIUM SOFT DRINKS Maiden Plate - 2200m



03 September 2023 - 12:25

Track Rating: Good 4, Weather: Fine, Rail Position: +9m Entire

Section	Overall	2000m	1800m	1600m	1400m	1200m	1000m	800m	600m	400m	200m
Section Times	2:24.98 [4] (0:17.50)	2:07.48 [8] (0:12.43)	1:55.05 [8] (0:12.94)	1:42.11 [8] (0:12.54)	1:29.57 [8] (0:13.15)	1:16.42 [8] (0:13.99)	1:02.43 [8] (0:13.37)	0:49.06 [5] (0:12.64)	0:36.42 [2] (0:12.04)	0:24.38 [3] (0:11.82)	0:12.56 [1] (0:12.56)
Average Speed [km/h]	41.2	58.0	56.1	57.8	55.2	51.5	54.5	58.1	60.5	60.9	57.4
Top Speed [km/h]	59.7	58.9	57.6	58.9	58.1	52.6	56.2	60.4	62.0	62.3	60.0
Avg. Dist. to Rail [m]	9.1	0.5	1.4	2.9	3.1	3.4	3.3	3.5	2.2	2.6	2.4
Avg. Stride Freq. [Hz]	2.3	2.3	2.3	2.3	2.2	2.2	2.2	2.3	2.4	2.4	2.3
Avg. Stride Length [m]	5.0	6.7	6.5	6.7	6.6	6.3	6.5	7.0	7.1	7.1	6.8



- [ ] Ranking at each section and finish
- .-.- No data available at this section
- NA No data available



Horse/Jockey Name	Royal George
Final Rank	5
Fastest Section Time (Section)	0:11.95 (400m)
Top Speed [km/h] (Section)	62.4 (Overall)
Race State	Finished



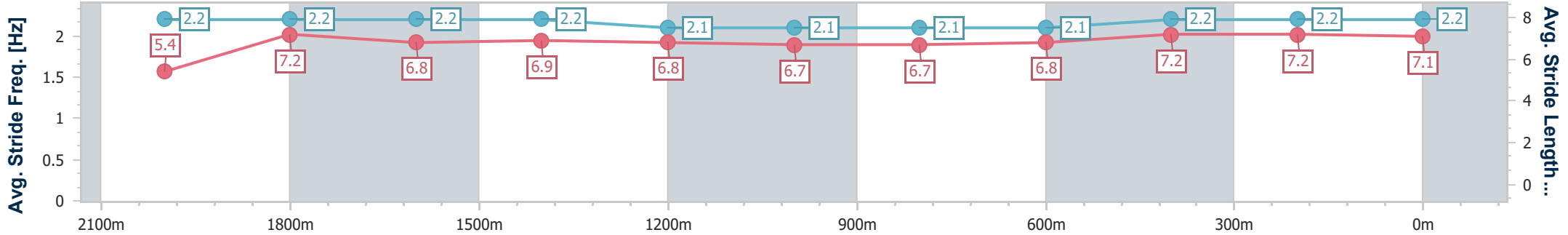
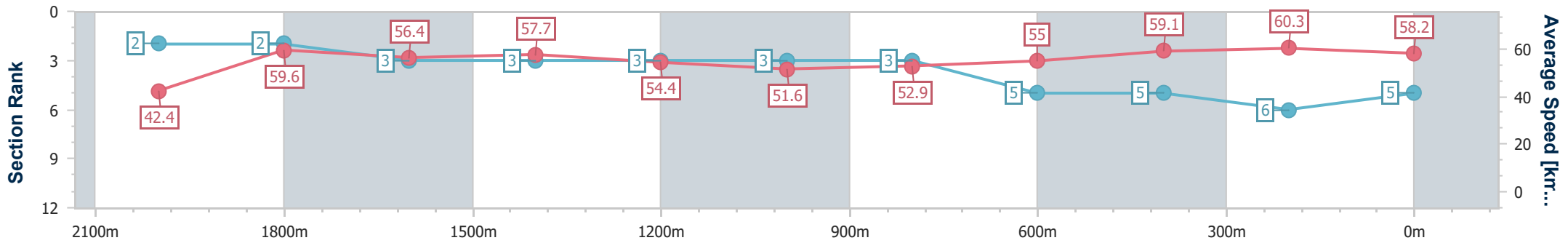
Sunshine Coast QLD Professional  
Race 1: WIMMERS PREMIUM SOFT DRINKS Maiden Plate - 2200m



03 September 2023 - 12:25

Track Rating: Good 4, Weather: Fine, Rail Position: +9m Entire

Section	Overall	2000m	1800m	1600m	1400m	1200m	1000m	800m	600m	400m	200m
Section Times	2:25.24 [5] (0:17.01)	2:08.23 [2] (0:12.13)	1:56.10 [2] (0:12.89)	1:43.21 [3] (0:12.55)	1:30.66 [3] (0:13.33)	1:17.33 [3] (0:13.97)	1:03.36 [3] (0:13.71)	0:49.65 [3] (0:13.18)	0:36.47 [5] (0:12.17)	0:24.30 [5] (0:11.95)	0:12.35 [6] (0:12.35)
Average Speed [km/h]	42.4	59.6	56.4	57.7	54.4	51.6	52.9	55.0	59.1	60.3	58.2
Top Speed [km/h]	62.4	62.4	57.1	58.1	57.1	52.6	54.2	57.7	59.9	60.9	59.7
Avg. Dist. to Rail [m]	9.4	0.7	1.5	2.8	2.2	2.3	2.1	1.3	0.2	0.3	1.3
Avg. Stride Freq. [Hz]	2.2	2.2	2.2	2.2	2.1	2.1	2.1	2.1	2.2	2.2	2.2
Avg. Stride Length [m]	5.4	7.2	6.8	6.9	6.8	6.7	6.7	6.8	7.2	7.2	7.1



- [ ] Ranking at each section and finish
- .-.- No data available at this section
- NA No data available



Horse/Jockey Name	Super Sweet
Final Rank	6
Fastest Section Time (Section)	0:12.00 (400m)
Top Speed [km/h] (Section)	62.2 (Overall)
Race State	Finished



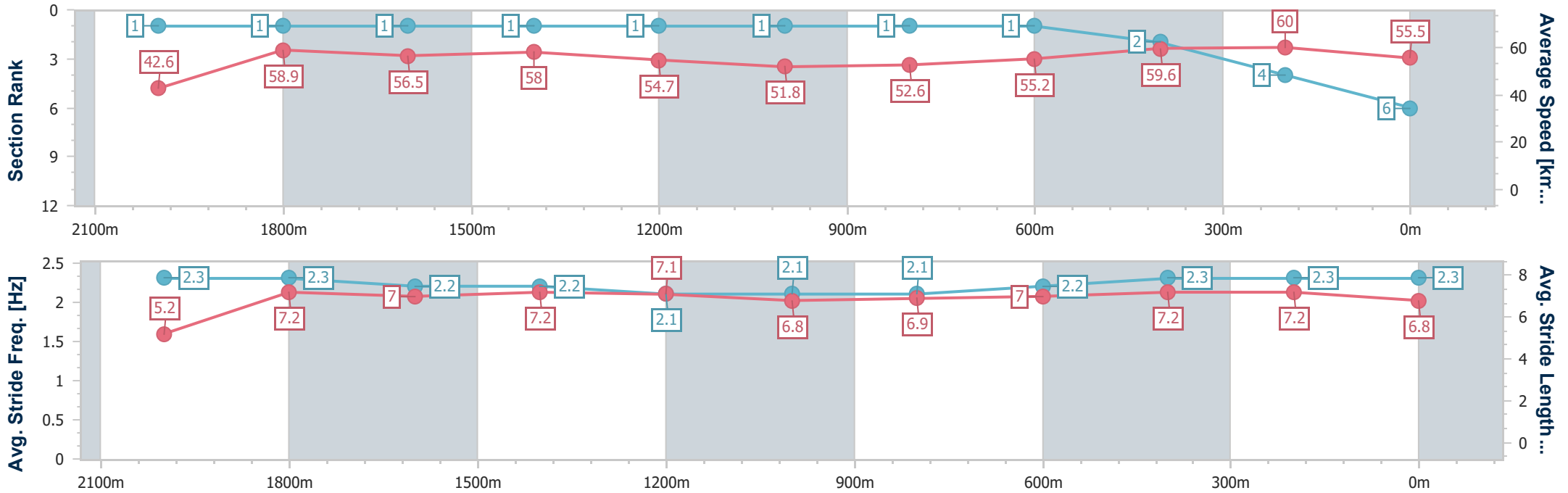
Sunshine Coast QLD Professional  
Race 1: WIMMERS PREMIUM SOFT DRINKS Maiden Plate - 2200m



03 September 2023 - 12:25

Track Rating: Good 4, Weather: Fine, Rail Position: +9m Entire

Section	Overall	2000m	1800m	1600m	1400m	1200m	1000m	800m	600m	400m	200m
Section Times	2:25.53 [6] (0:16.92)	2:08.61 [1] (0:12.15)	1:56.46 [1] (0:12.73)	1:43.73 [1] (0:12.50)	1:31.23 [1] (0:13.29)	1:17.94 [1] (0:13.94)	1:04.00 [1] (0:13.80)	0:50.20 [1] (0:13.17)	0:37.03 [1] (0:12.07)	0:24.96 [2] (0:12.00)	0:12.96 [4] (0:12.96)
Average Speed [km/h]	42.6	58.9	56.5	58.0	54.7	51.8	52.6	55.2	59.6	60.0	55.5
Top Speed [km/h]	62.2	61.8	57.5	59.5	57.4	53.2	53.3	58.7	60.8	61.2	57.5
Avg. Dist. to Rail [m]	6.7	1.2	0.6	2.8	3.3	3.2	3.0	1.6	0.2	0.4	0.3
Avg. Stride Freq. [Hz]	2.3	2.3	2.2	2.2	2.1	2.1	2.1	2.2	2.3	2.3	2.3
Avg. Stride Length [m]	5.2	7.2	7.0	7.2	7.1	6.8	6.9	7.0	7.2	7.2	6.8



- [ ] Ranking at each section and finish
- .-.- No data available at this section
- NA No data available





Horse/Jockey Name	Medieval Crown
Final Rank	7
Fastest Section Time (Section)	0:11.91 (400m)
Top Speed [km/h] (Section)	61.3 (400m)
Race State	Finished



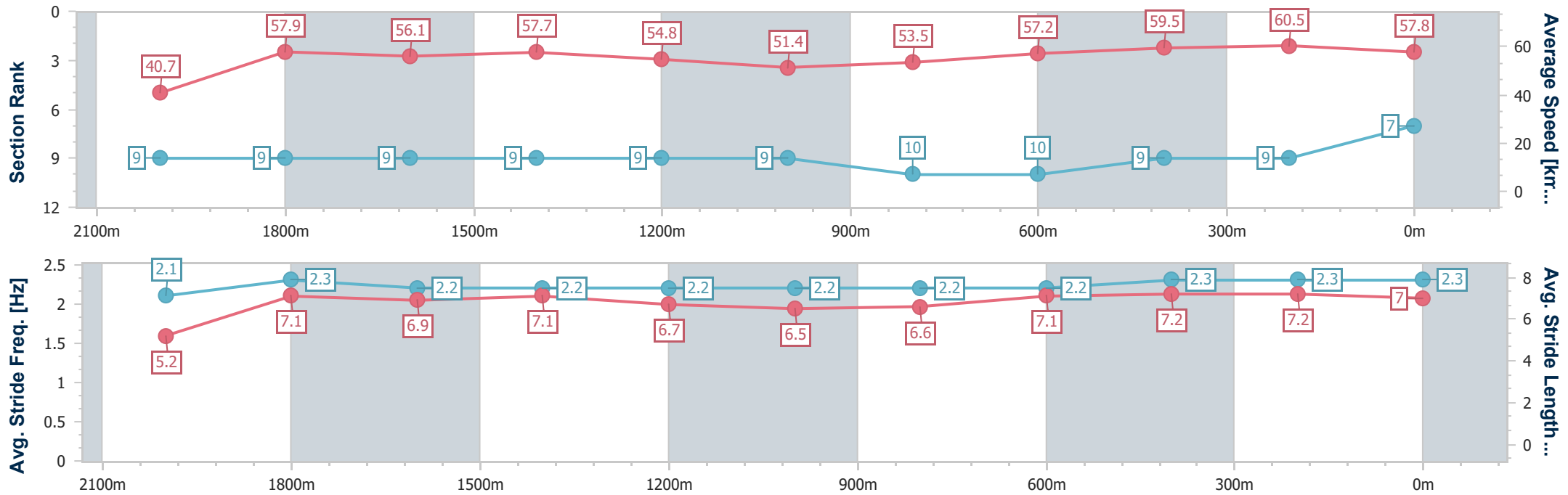
Sunshine Coast QLD Professional  
Race 1: WIMMERS PREMIUM SOFT DRINKS Maiden Plate - 2200m



03 September 2023 - 12:25

Track Rating: Good 4, Weather: Fine, Rail Position: +9m Entire

Section	Overall	2000m	1800m	1600m	1400m	1200m	1000m	800m	600m	400m	200m
Section Times	2:25.68 [7] (0:17.69)	2:07.99 [9] (0:12.41)	1:55.58 [9] (0:12.83)	1:42.75 [9] (0:12.54)	1:30.21 [9] (0:13.21)	1:17.00 [9] (0:14.02)	1:02.98 [9] (0:13.55)	0:49.43 [10] (0:12.78)	0:36.65 [10] (0:12.30)	0:24.35 [9] (0:11.91)	0:12.44 [9] (0:12.44)
Average Speed [km/h]	40.7	57.9	56.1	57.7	54.8	51.4	53.5	57.2	59.5	60.5	57.8
Top Speed [km/h]	60.5	59.3	57.8	58.8	58.1	52.4	55.6	60.3	60.9	61.3	59.6
Avg. Dist. to Rail [m]	5.8	0.5	0.3	1.7	2.0	2.4	2.2	2.7	2.7	2.0	2.0
Avg. Stride Freq. [Hz]	2.1	2.3	2.2	2.2	2.2	2.2	2.2	2.2	2.3	2.3	2.3
Avg. Stride Length [m]	5.2	7.1	6.9	7.1	6.7	6.5	6.6	7.1	7.2	7.2	7.0



- [ ] Ranking at each section and finish
- .-.- No data available at this section
- NA No data available



Horse/Jockey Name	Snippety Bobbins
Final Rank	8
Fastest Section Time (Section)	0:12.06 (2000m)
Top Speed [km/h] (Section)	62.4 (2000m)
Race State	Finished



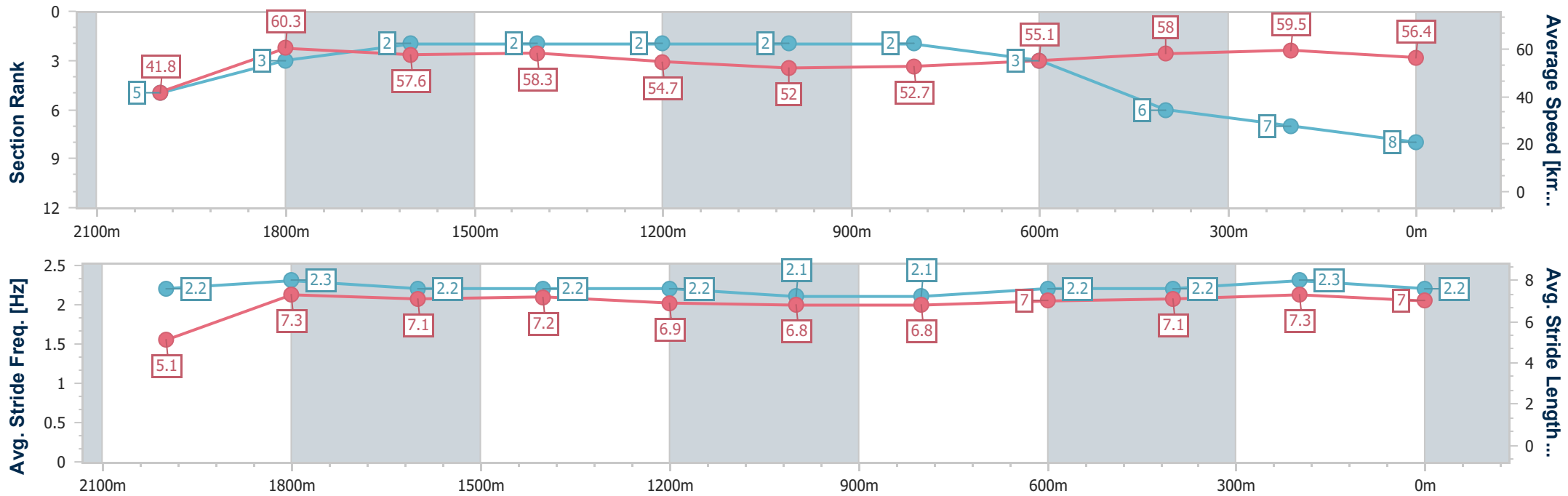
Sunshine Coast QLD Professional  
 Race 1: WIMMERS PREMIUM SOFT DRINKS Maiden Plate - 2200m



03 September 2023 - 12:25

Track Rating: Good 4, Weather: Fine, Rail Position: +9m Entire

Section	Overall	2000m	1800m	1600m	1400m	1200m	1000m	800m	600m	400m	200m
Section Times	2:25.99 [8] (0:17.24)	2:08.75 [5] (0:12.06)	1:56.69 [3] (0:12.65)	1:44.04 [2] (0:12.48)	1:31.56 [2] (0:13.31)	1:18.25 [2] (0:13.87)	1:04.38 [2] (0:13.79)	0:50.59 [2] (0:13.23)	0:37.36 [3] (0:12.51)	0:24.85 [6] (0:12.07)	0:12.78 [7] (0:12.78)
Average Speed [km/h]	41.8	60.3	57.6	58.3	54.7	52.0	52.7	55.1	58.0	59.5	56.4
Top Speed [km/h]	61.0	62.4	58.4	59.7	57.0	53.2	53.3	57.5	59.7	60.7	58.5
Avg. Dist. to Rail [m]	8.5	2.0	2.3	4.1	3.7	3.6	3.2	2.3	1.1	2.6	3.7
Avg. Stride Freq. [Hz]	2.2	2.3	2.2	2.2	2.2	2.1	2.1	2.2	2.2	2.3	2.2
Avg. Stride Length [m]	5.1	7.3	7.1	7.2	6.9	6.8	6.8	7.0	7.1	7.3	7.0



- [ ] Ranking at each section and finish
- .-.- No data available at this section
- NA No data available



Horse/Jockey Name	Set Beat
Final Rank	9
Fastest Section Time (Section)	0:12.07 (400m)
Top Speed [km/h] (Section)	62.2 (Overall)
Race State	Finished



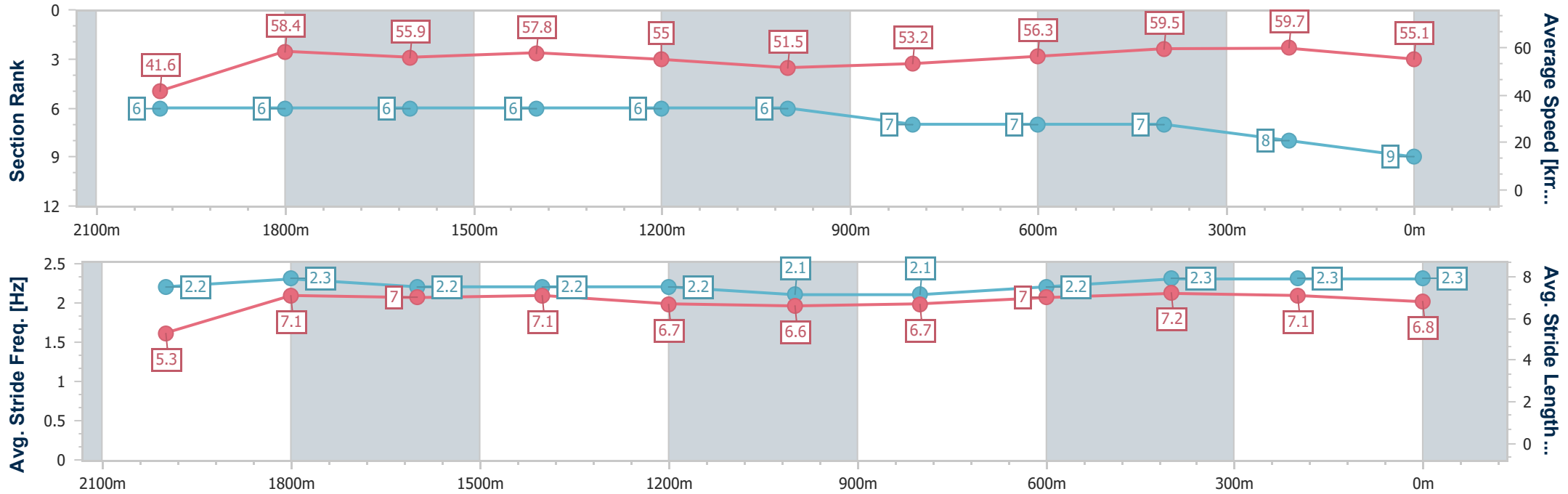
Sunshine Coast QLD Professional  
Race 1: WIMMERS PREMIUM SOFT DRINKS Maiden Plate - 2200m



03 September 2023 - 12:25

Track Rating: Good 4, Weather: Fine, Rail Position: +9m Entire

Section	Overall	2000m	1800m	1600m	1400m	1200m	1000m	800m	600m	400m	200m
Section Times	2:26.34 [9] (0:17.32)	2:09.02 [6] (0:12.32)	1:56.70 [6] (0:12.93)	1:43.77 [6] (0:12.54)	1:31.23 [6] (0:13.20)	1:18.03 [6] (0:14.02)	1:04.01 [6] (0:13.62)	0:50.39 [7] (0:12.96)	0:37.43 [7] (0:12.26)	0:25.17 [7] (0:12.07)	0:13.10 [8] (0:13.10)
Average Speed [km/h]	41.6	58.4	55.9	57.8	55.0	51.5	53.2	56.3	59.5	59.7	55.1
Top Speed [km/h]	62.2	60.3	56.4	59.0	57.4	52.8	54.8	58.9	60.5	60.5	58.9
Avg. Dist. to Rail [m]	6.8	0.2	0.9	2.8	3.1	3.1	2.9	2.4	2.7	5.7	7.3
Avg. Stride Freq. [Hz]	2.2	2.3	2.2	2.2	2.2	2.1	2.1	2.2	2.3	2.3	2.3
Avg. Stride Length [m]	5.3	7.1	7.0	7.1	6.7	6.6	6.7	7.0	7.2	7.1	6.8



- [ ] Ranking at each section and finish
- .-.- No data available at this section
- NA No data available



Horse/Jockey Name	Teppanyaki
Final Rank	10
Fastest Section Time (Section)	0:12.40 (600m)
Top Speed [km/h] (Section)	60.5 (Overall)
Race State	Finished



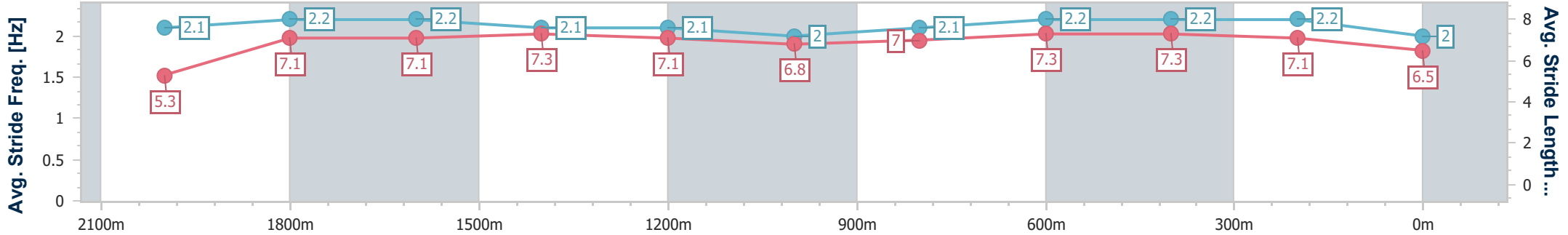
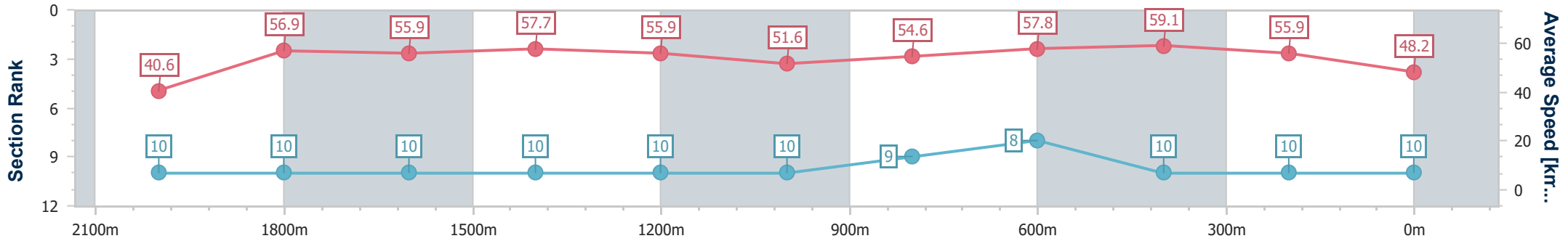
Sunshine Coast QLD Professional  
Race 1: WIMMERS PREMIUM SOFT DRINKS Maiden Plate - 2200m



03 September 2023 - 12:25

Track Rating: Good 4, Weather: Fine, Rail Position: +9m Entire

Section	Overall	2000m	1800m	1600m	1400m	1200m	1000m	800m	600m	400m	200m
Section Times	2:29.19 [10] (0:17.71)	2:11.48 [10] (0:12.72)	1:58.76 [10] (0:12.95)	1:45.81 [10] (0:12.53)	1:33.28 [10] (0:12.97)	1:20.31 [10] (0:14.01)	1:06.30 [10] (0:13.28)	0:53.02 [9] (0:12.77)	0:40.25 [8] (0:12.40)	0:27.85 [10] (0:12.90)	0:14.95 [10] (0:14.95)
Average Speed [km/h]	40.6	56.9	55.9	57.7	55.9	51.6	54.6	57.8	59.1	55.9	48.2
Top Speed [km/h]	60.5	57.8	57.1	59.2	59.0	53.0	57.4	59.2	59.5	58.9	52.5
Avg. Dist. to Rail [m]	7.2	0.8	0.8	2.0	2.9	3.6	3.4	4.2	3.3	4.2	4.6
Avg. Stride Freq. [Hz]	2.1	2.2	2.2	2.1	2.1	2.0	2.1	2.2	2.2	2.2	2.0
Avg. Stride Length [m]	5.3	7.1	7.1	7.3	7.1	6.8	7.0	7.3	7.3	7.1	6.5



- [ ] Ranking at each section and finish
- .-.- No data available at this section
- NA No data available