



Aquis Park Gold Coast Poly QLD Professional

Race 4: KITCHEN CABINET SPECIALIST Maiden Plate - 1900m

10 June 2023 - 14:20



Track Rating: Synthetic , Weather: Fine, Rail Position: True

Section		Field Times												
		Overall	1800m	1600m	1400m	1200m	1000m	800m	Last 600m					
		1:58.56 (0:08.06)	1:50.50 (0:11.43)	1:39.07 (0:11.53)	1:27.54 (0:12.23)	1:15.31 (0:12.84)	1:02.47 (0:12.61)	0:49.86 (0:12.43)	0:37.43					
Rank	TAB	Horse/Jockey	Barrier	Top Speed [km/h]	Fastest Section								Distance Travelled [m]	
1	4	PATTI WAGGIN Jai Williams	2	64.4 1800m	0:08.06 Overall	1:58.56 [1] (0:08.06)	1:50.50 [1] (0:11.47)	1:39.03 [3] (0:11.90)	1:27.13 [3] (0:12.29)	1:14.84 [3] (0:12.72)	1:02.12 [3] (0:12.59)	0:49.53 [3] (0:12.20)	0:37.33	
2	5	BOSTON OF TUFFY Bailey Wheeler	7	65.6 1800m	0:08.27 Overall	1:58.92 [2] (0:08.27)	1:50.65 [8] (0:11.42)	1:39.23 [4] (0:11.98)	1:27.25 [4] (0:12.39)	1:14.86 [4] (0:12.63)	1:02.23 [4] (0:12.64)	0:49.59 [4] (0:12.10)	0:37.49	-1
3	8	SUPER FENKEL Matthew McGillivray	5	65.5 1800m	0:08.42 Overall	1:59.33 [3] (0:08.42)	1:50.91 [9] (0:11.44)	1:39.47 [7] (0:12.03)	1:27.44 [6] (0:12.43)	1:15.01 [6] (0:12.56)	1:02.45 [7] (0:12.71)	0:49.74 [8] (0:12.15)	0:37.59	-1
4	9	CHOOKY CHEERLEADER Montana Philpot	3	64.8 1800m	0:08.21 Overall	1:59.55 [4] (0:08.21)	1:51.34 [4] (0:11.57)	1:39.77 [5] (0:11.99)	1:27.78 [5] (0:12.43)	1:15.35 [5] (0:12.50)	1:02.85 [5] (0:12.69)	0:50.16 [5] (0:12.22)	0:37.94	-8
5	12	PSYCHIC ROSE Casey Waddell	10	63.3 1800m	0:08.24 Overall	1:59.87 [5] (0:08.24)	1:51.63 [5] (0:11.72)	1:39.91 [8] (0:12.19)	1:27.72 [8] (0:12.41)	1:15.31 [8] (0:12.44)	1:02.87 [10] (0:12.81)	0:50.06 [10] (0:12.06)	0:38.00	+5
6	3	KURABENII Tahlia Fenlon	11	66.7 1800m	0:08.18 Overall	1:59.99 [6] (0:08.18)	1:51.81 [3] (0:11.34)	1:40.47 [2] (0:11.50)	1:28.97 [1] (0:12.23)	1:16.74 [1] (0:12.84)	1:03.90 [1] (0:12.61)	0:51.29 [1] (0:12.43)	0:38.86	-3
7	1	ARCTIC DASHER Karl Zechner	1	65.3 1800m	0:08.12 Overall	2:00.22 [7] (0:08.12)	1:52.10 [2] (0:11.37)	1:40.73 [1] (0:11.71)	1:29.02 [2] (0:12.33)	1:16.69 [2] (0:12.75)	1:03.94 [2] (0:12.65)	0:51.29 [2] (0:12.29)	0:39.00	-6
8	6	DON'TKICKAMOOCOW Michael Murphy	8	65.8 1800m	0:08.26 Overall	2:00.50 [8] (0:08.26)	1:52.24 [6] (0:11.54)	1:40.70 [6] (0:12.17)	1:28.53 [7] (0:12.56)	1:15.97 [7] (0:12.31)	1:03.66 [6] (0:12.72)	0:50.94 [6] (0:12.47)	0:38.47	+7
9	11	ANOTHER DIME Sean Cormack	12	64.1 1800m	0:08.27 Overall	2:01.29 [9] (0:08.27)	1:53.02 [7] (0:11.86)	1:41.16 [11] (0:12.34)	1:28.82 [11] (0:12.30)	1:16.52 [10] (0:12.22)	1:04.30 [9] (0:12.71)	0:51.59 [9] (0:12.20)	0:39.39	+10
10	7	FIT OF RAGE Georgina Cartwright	9	64.5 1800m	0:08.48 Overall	2:01.71 [10] (0:08.48)	1:53.23 [11] (0:11.59)	1:41.64 [10] (0:12.33)	1:29.31 [10] (0:12.38)	1:16.93 [11] (0:12.39)	1:04.54 [11] (0:12.69)	0:51.85 [11] (0:12.32)	0:39.53	-7

Scratched: Cee Eye Cee (#2), Jester Statement (#13)



Aquis Park Gold Coast Poly QLD Professional
Race 4: KITCHEN CABINET SPECIALIST Maiden Plate - 1900m
10 June 2023 - 14:20



Track Rating: Synthetic , Weather: Fine, Rail Position: True

Section	Overall	1800m	1600m	1400m	1200m	1000m	800m	Last 600m						
Field Times	1:58.56 (0:08.06)	1:50.50 (0:11.43)	1:39.07 (0:11.53)	1:27.54 (0:12.23)	1:15.31 (0:12.84)	1:02.47 (0:12.61)	0:49.86 (0:12.43)	0:37.43						
Rank	TAB	Horse/Jockey	Barrier	Top Speed [km/h]	Fastest Section				Distance Travelled [m]					
11	10	TOPTIMISTIC Chris Taylor	6	64.2 1800m	0:08.46 Overall	2:01.88 [11] (0:08.46)	1:53.42 [10] (0:11.58)	1:41.84 [9] (0:12.13)	1:29.71 [9] (0:12.40)	1:17.31 [9] (0:12.35)	1:04.96 [8] (0:12.67)	0:52.29 [7] (0:12.31)	0:39.98	-7

Scratched: Cee Eye Cee (#2), Jester Statement (#13)

[] Ranking at each section and finish
 -:-:-:- No data available at this section
 NA No data available

SCN Saddle cloth number
 DNF Did not finish
 DNT Did not track



Aquis Park Gold Coast Poly QLD Professional

Race 4: KITCHEN CABINET SPECIALIST Maiden Plate - 1900m

10 June 2023 - 14:20



Track Rating: Synthetic , Weather: Fine, Rail Position: True

Section				600m	400m	200m			Last 600m		
Field Times				0:37.43 (0:12.20)	0:25.23 (0:12.48)	0:12.75 (0:12.75)			0:37.43		
Rank	TAB	Horse/Jockey	Barrier	Top Speed [km/h]	Fastest Section	Margin			Distance Travelled [m]		
1	4	PATTI WAGGIN Jai Williams	2	64.4 1800m	0:08.06 Overall	0:37.33 [3] (0:12.11)	0:25.22 [2] (0:12.47)	0:12.75 [1] (0:12.75)	1:58.56	0:37.33	
2	5	BOSTON OF TUFFY Bailey Wheeler	7	65.6 1800m	0:08.27 Overall	0:37.49 [4] (0:12.19)	0:25.30 [4] (0:12.65)	0:12.65 [3] (0:12.65)	2L	0:37.49	-1
3	8	SUPER FENKEL Matthew McGillivray	5	65.5 1800m	0:08.42 Overall	0:37.59 [6] (0:12.30)	0:25.29 [6] (0:12.54)	0:12.75 [4] (0:12.75)	4.3L	0:37.59	-1
4	9	CHOOKY CHEERLEADER Montana Philpot	3	64.8 1800m	0:08.21 Overall	0:37.94 [5] (0:12.33)	0:25.61 [5] (0:12.84)	0:12.77 [6] (0:12.77)	5.6L	0:37.94	-8
5	12	PSYCHIC ROSE Casey Waddell	10	63.3 1800m	0:08.24 Overall	0:38.00 [7] (0:12.33)	0:25.67 [7] (0:12.79)	0:12.88 [7] (0:12.88)	7.4L	0:38.00	+5
6	3	KURABENII Tahlia Fenlon	11	66.7 1800m	0:08.18 Overall	0:38.86 [1] (0:12.20)	0:26.66 [1] (0:12.93)	0:13.73 [2] (0:13.73)	7.9L	0:38.86	-3
7	1	ARCTIC DASHER Karl Zechner	1	65.3 1800m	0:08.12 Overall	0:39.00 [2] (0:12.40)	0:26.60 [3] (0:13.08)	0:13.52 [5] (0:13.52)	9.2L	0:39.00	-6
8	6	DON'TKICKAMOOCOW Michael Murphy	8	65.8 1800m	0:08.26 Overall	0:38.47 [10] (0:12.75)	0:25.72 [10] (0:12.78)	0:12.94 [9] (0:12.94)	10.7L	0:38.47	+7
9	11	ANOTHER DIME Sean Cormack	12	64.1 1800m	0:08.27 Overall	0:39.39 [9] (0:12.33)	0:27.06 [8] (0:12.99)	0:14.07 [8] (0:14.07)	15.2L	0:39.39	+10
10	7	FIT OF RAGE Georgina Cartwright	9	64.5 1800m	0:08.48 Overall	0:39.53 [11] (0:12.75)	0:26.78 [11] (0:13.27)	0:13.51 [11] (0:13.51)	17.7L	0:39.53	-7

Scratched: Cee Eye Cee (#2), Jester Statement (#13)

[] Ranking at each section and finish
 -:-:- No data available at this section
 NA No data available

SCN Saddle cloth number
 DNF Did not finish
 DNT Did not track



Aquis Park Gold Coast Poly QLD Professional
Race 4: KITCHEN CABINET SPECIALIST Maiden Plate - 1900m
10 June 2023 - 14:20



Track Rating: Synthetic , Weather: Fine, Rail Position: True

Section		600m	400m	200m				Last 600m		
Field Times		0:37.43 (0:12.20)	0:25.23 (0:12.48)	0:12.75 (0:12.75)				0:37.43		
Rank	TAB Horse/Jockey	Barrier	Top Speed [km/h]	Fastest Section	Margin			Distance Travelled [m]		
11	10 TOPTIMISTIC	6	64.2	0:08.46	0:39.98 [8]	0:27.36 [9]	0:14.06 [10]	18.5L	0:39.98	-7
	Chris Taylor		1800m	Overall	(0:12.62)	(0:13.30)	(0:14.06)			

Scratched: Cee Eye Cee (#2), Jester Statement (#13)

[] Ranking at each section and finish
 -:-:- No data available at this section
 NA No data available

SCN Saddle cloth number
 DNF Did not finish
 DNT Did not track



Horse/Jockey Name	Patti Waggin
Final Rank	1
Fastest Section Time (Section)	0:08.06 (Overall)
Top Speed [km/h] (Section)	64.4 (1800m)
Race State	Finished



Aquis Park Gold Coast Poly QLD Professional

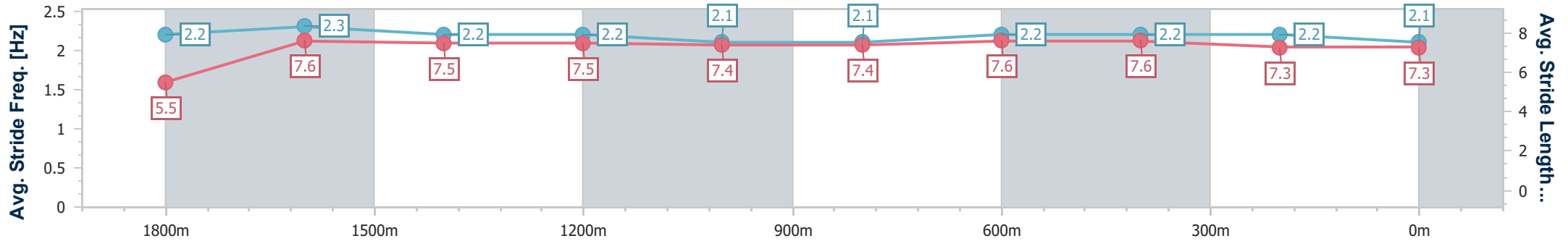
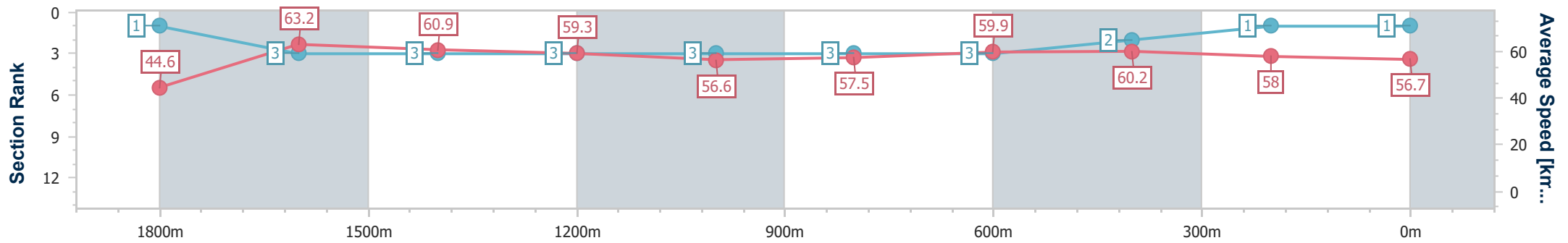
Race 4: KITCHEN CABINET SPECIALIST Maiden Plate - 1900m



10 June 2023 - 14:20

Track Rating: Synthetic , Weather: Fine, Rail Position: True

Section	Overall	1800m	1600m	1400m	1200m	1000m	800m	600m	400m	200m
Section Times	1:58.56 [1] (0:08.06)	1:50.50 [1] (0:11.47)	1:39.03 [3] (0:11.90)	1:27.13 [3] (0:12.29)	1:14.84 [3] (0:12.72)	1:02.12 [3] (0:12.59)	0:49.53 [3] (0:12.20)	0:37.33 [3] (0:12.11)	0:25.22 [2] (0:12.47)	0:12.75 [1] (0:12.75)
Average Speed [km/h]	44.6	63.2	60.9	59.3	56.6	57.5	59.9	60.2	58.0	56.7
Top Speed [km/h]	61.4	64.4	61.6	60.4	57.8	59.1	61.4	61.5	59.1	57.3
Avg. Dist. to Rail [m]	1.6	1.7	2.3	1.3	1.6	1.9	2.6	2.5	3.2	3.9
Avg. Stride Freq. [Hz]	2.2	2.3	2.2	2.2	2.1	2.1	2.2	2.2	2.2	2.1
Avg. Stride Length [m]	5.5	7.6	7.5	7.5	7.4	7.4	7.6	7.6	7.3	7.3



- [] Ranking at each section and finish
- .-.- No data available at this section
- NA No data available



Horse/Jockey Name	Boston Of Tuffy
Final Rank	2
Fastest Section Time (Section)	0:08.27 (Overall)
Top Speed [km/h] (Section)	65.6 (1800m)
Race State	Finished



Aquis Park Gold Coast Poly QLD Professional

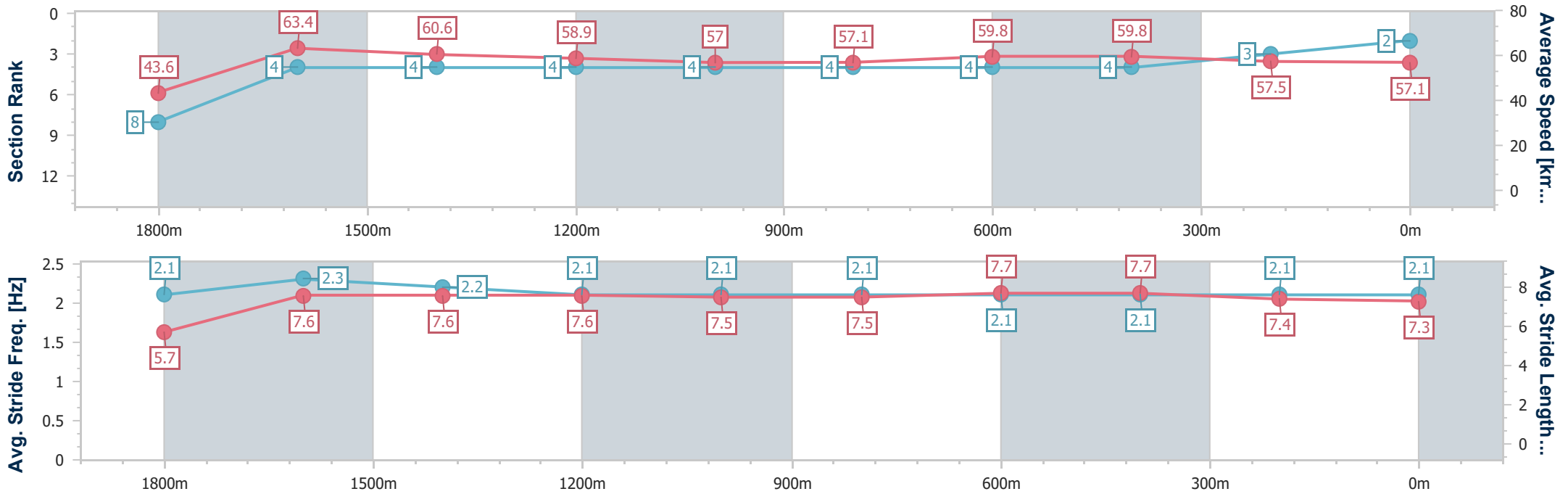
Race 4: KITCHEN CABINET SPECIALIST Maiden Plate - 1900m



10 June 2023 - 14:20

Track Rating: Synthetic , Weather: Fine, Rail Position: True

Section	Overall	1800m	1600m	1400m	1200m	1000m	800m	600m	400m	200m
Section Times	1:58.92 [2] (0:08.27)	1:50.65 [8] (0:11.42)	1:39.23 [4] (0:11.98)	1:27.25 [4] (0:12.39)	1:14.86 [4] (0:12.63)	1:02.23 [4] (0:12.64)	0:49.59 [4] (0:12.10)	0:37.49 [4] (0:12.19)	0:25.30 [4] (0:12.65)	0:12.65 [3] (0:12.65)
Average Speed [km/h]	43.6	63.4	60.6	58.9	57.0	57.1	59.8	59.8	57.5	57.1
Top Speed [km/h]	61.6	65.6	62.3	60.1	58.0	59.3	61.0	61.3	58.9	57.9
Avg. Dist. to Rail [m]	5.2	2.7	3.0	1.6	1.7	1.0	1.0	2.3	5.1	6.0
Avg. Stride Freq. [Hz]	2.1	2.3	2.2	2.1	2.1	2.1	2.1	2.1	2.1	2.1
Avg. Stride Length [m]	5.7	7.6	7.6	7.6	7.5	7.5	7.7	7.7	7.4	7.3



- [] Ranking at each section and finish
- .-.- No data available at this section
- NA No data available



Horse/Jockey Name	Super Fenkel
Final Rank	3
Fastest Section Time (Section)	0:08.42 (Overall)
Top Speed [km/h] (Section)	65.5 (1800m)
Race State	Finished



Aquis Park Gold Coast Poly QLD Professional

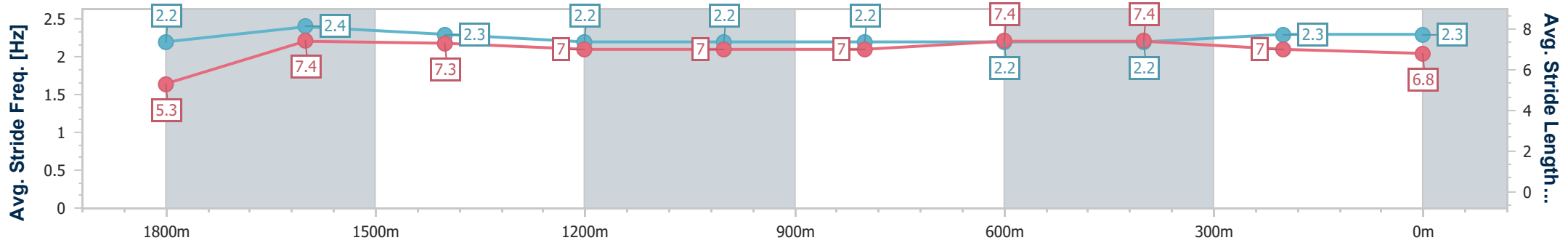
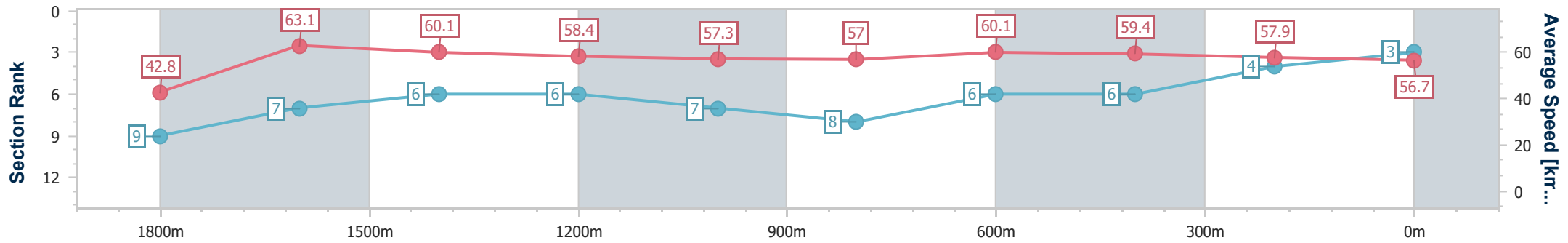
Race 4: KITCHEN CABINET SPECIALIST Maiden Plate - 1900m



10 June 2023 - 14:20

Track Rating: Synthetic , Weather: Fine, Rail Position: True

Section	Overall	1800m	1600m	1400m	1200m	1000m	800m	600m	400m	200m
Section Times	1:59.33 [3] (0:08.42)	1:50.91 [9] (0:11.44)	1:39.47 [7] (0:12.03)	1:27.44 [6] (0:12.43)	1:15.01 [6] (0:12.56)	1:02.45 [7] (0:12.71)	0:49.74 [8] (0:12.15)	0:37.59 [6] (0:12.30)	0:25.29 [6] (0:12.54)	0:12.75 [4] (0:12.75)
Average Speed [km/h]	42.8	63.1	60.1	58.4	57.3	57.0	60.1	59.4	57.9	56.7
Top Speed [km/h]	60.7	65.5	60.7	60.6	57.8	60.2	60.7	60.5	58.7	57.7
Avg. Dist. to Rail [m]	3.1	1.4	1.4	1.3	2.0	1.6	2.6	2.9	5.4	7.6
Avg. Stride Freq. [Hz]	2.2	2.4	2.3	2.2	2.2	2.2	2.2	2.2	2.3	2.3
Avg. Stride Length [m]	5.3	7.4	7.3	7.0	7.0	7.0	7.4	7.4	7.0	6.8



- [] Ranking at each section and finish
- .-.- No data available at this section
- NA No data available



Horse/Jockey Name	Chooky Cheerleader
Final Rank	4
Fastest Section Time (Section)	0:08.21 (Overall)
Top Speed [km/h] (Section)	64.8 (1800m)
Race State	Finished



Aquis Park Gold Coast Poly QLD Professional

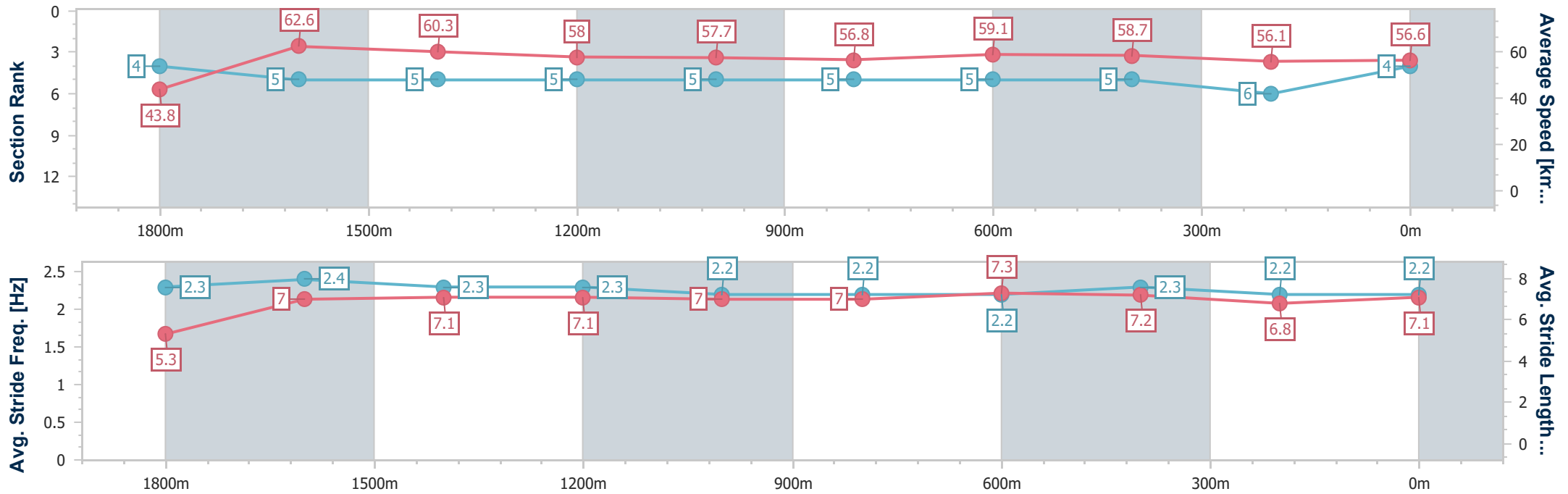
Race 4: KITCHEN CABINET SPECIALIST Maiden Plate - 1900m



10 June 2023 - 14:20

Track Rating: Synthetic , Weather: Fine, Rail Position: True

Section	Overall	1800m	1600m	1400m	1200m	1000m	800m	600m	400m	200m
Section Times	1:59.55 [4] (0:08.21)	1:51.34 [4] (0:11.57)	1:39.77 [5] (0:11.99)	1:27.78 [5] (0:12.43)	1:15.35 [5] (0:12.50)	1:02.85 [5] (0:12.69)	0:50.16 [5] (0:12.22)	0:37.94 [5] (0:12.33)	0:25.61 [5] (0:12.84)	0:12.77 [6] (0:12.77)
Average Speed [km/h]	43.8	62.6	60.3	58.0	57.7	56.8	59.1	58.7	56.1	56.6
Top Speed [km/h]	58.7	64.8	61.1	59.6	59.3	58.8	59.9	60.2	56.6	57.0
Avg. Dist. to Rail [m]	3.6	2.0	1.2	0.4	0.5	0.5	0.7	1.0	1.1	2.4
Avg. Stride Freq. [Hz]	2.3	2.4	2.3	2.3	2.2	2.2	2.2	2.3	2.2	2.2
Avg. Stride Length [m]	5.3	7.0	7.1	7.1	7.0	7.0	7.3	7.2	6.8	7.1



- [] Ranking at each section and finish
- .-.- No data available at this section
- NA No data available



Horse/Jockey Name	Psychic Rose
Final Rank	5
Fastest Section Time (Section)	0:08.24 (Overall)
Top Speed [km/h] (Section)	63.3 (1800m)
Race State	Finished



Aquis Park Gold Coast Poly QLD Professional

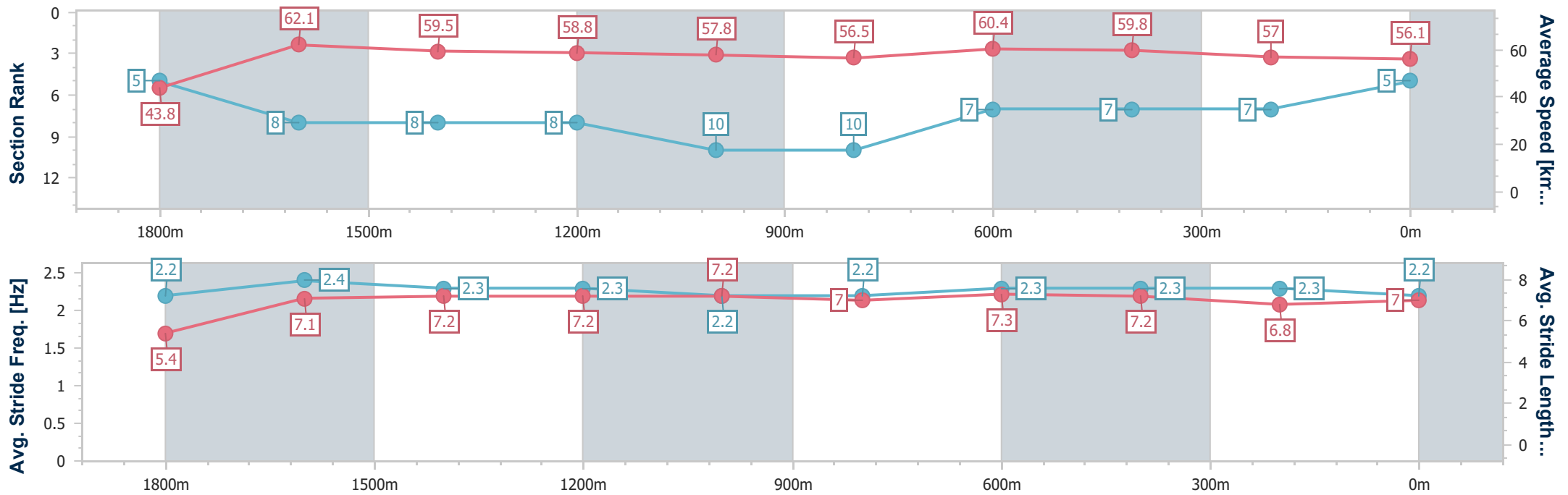
Race 4: KITCHEN CABINET SPECIALIST Maiden Plate - 1900m



10 June 2023 - 14:20

Track Rating: Synthetic , Weather: Fine, Rail Position: True

Section	Overall	1800m	1600m	1400m	1200m	1000m	800m	600m	400m	200m
Section Times	1:59.87 [5] (0:08.24)	1:51.63 [5] (0:11.72)	1:39.91 [8] (0:12.19)	1:27.72 [8] (0:12.41)	1:15.31 [8] (0:12.44)	1:02.87 [10] (0:12.81)	0:50.06 [10] (0:12.06)	0:38.00 [7] (0:12.33)	0:25.67 [7] (0:12.79)	0:12.88 [7] (0:12.88)
Average Speed [km/h]	43.8	62.1	59.5	58.8	57.8	56.5	60.4	59.8	57.0	56.1
Top Speed [km/h]	60.5	63.3	60.7	59.2	58.8	58.7	61.1	61.2	58.1	57.1
Avg. Dist. to Rail [m]	8.5	4.9	1.6	1.5	2.0	1.6	2.6	4.6	6.6	6.2
Avg. Stride Freq. [Hz]	2.2	2.4	2.3	2.3	2.2	2.2	2.3	2.3	2.3	2.2
Avg. Stride Length [m]	5.4	7.1	7.2	7.2	7.2	7.0	7.3	7.2	6.8	7.0



- [] Ranking at each section and finish
- .-.- No data available at this section
- NA No data available



Horse/Jockey Name	Kurabonii
Final Rank	6
Fastest Section Time (Section)	0:08.18 (Overall)
Top Speed [km/h] (Section)	66.7 (1800m)
Race State	Finished



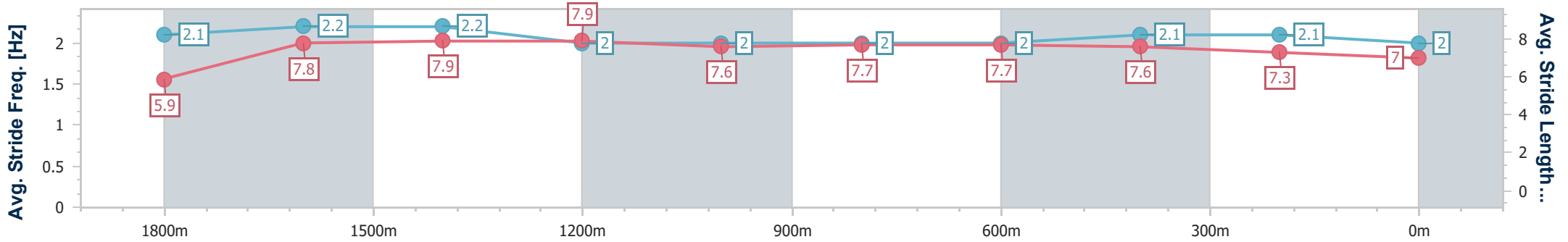
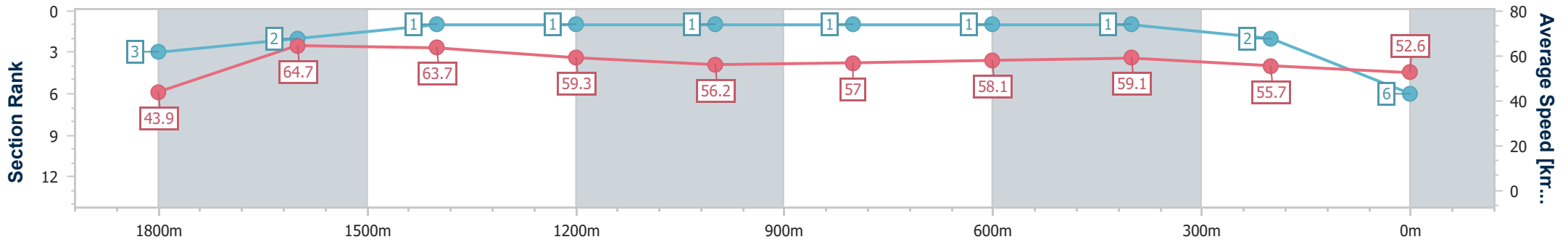
Aquis Park Gold Coast Poly QLD Professional
Race 4: KITCHEN CABINET SPECIALIST Maiden Plate - 1900m



10 June 2023 - 14:20

Track Rating: Synthetic , Weather: Fine, Rail Position: True

Section	Overall	1800m	1600m	1400m	1200m	1000m	800m	600m	400m	200m
Section Times	1:59.99 [6] (0:08.18)	1:51.81 [3] (0:11.34)	1:40.47 [2] (0:11.50)	1:28.97 [1] (0:12.23)	1:16.74 [1] (0:12.84)	1:03.90 [1] (0:12.61)	0:51.29 [1] (0:12.43)	0:38.86 [1] (0:12.20)	0:26.66 [1] (0:12.93)	0:13.73 [2] (0:13.73)
Average Speed [km/h]	43.9	64.7	63.7	59.3	56.2	57.0	58.1	59.1	55.7	52.6
Top Speed [km/h]	62.6	66.7	64.7	62.7	57.0	57.7	60.5	60.9	56.9	54.0
Avg. Dist. to Rail [m]	9.1	6.2	4.1	0.8	0.5	0.4	0.5	0.4	0.6	0.8
Avg. Stride Freq. [Hz]	2.1	2.2	2.2	2.0	2.0	2.0	2.0	2.1	2.1	2.0
Avg. Stride Length [m]	5.9	7.8	7.9	7.9	7.6	7.7	7.7	7.6	7.3	7.0



- [] Ranking at each section and finish
- .-.- No data available at this section
- NA No data available



Horse/Jockey Name	Arctic Dasher
Final Rank	7
Fastest Section Time (Section)	0:08.12 (Overall)
Top Speed [km/h] (Section)	65.3 (1800m)
Race State	Finished



Aquis Park Gold Coast Poly QLD Professional

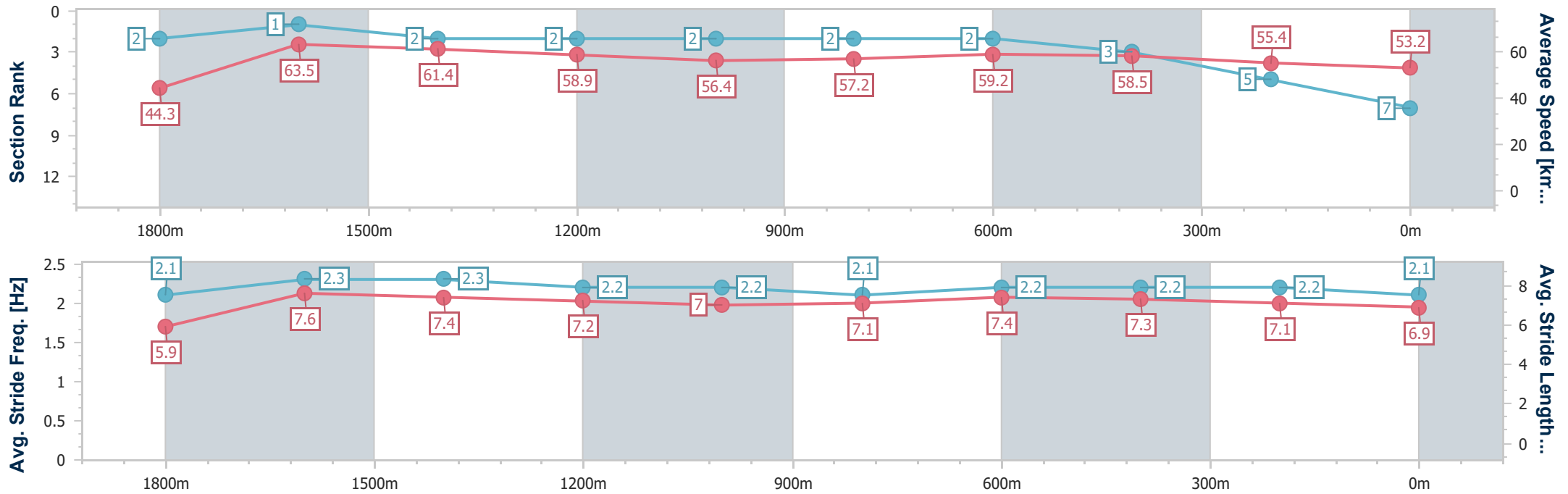
Race 4: KITCHEN CABINET SPECIALIST Maiden Plate - 1900m



10 June 2023 - 14:20

Track Rating: Synthetic , Weather: Fine, Rail Position: True

Section	Overall	1800m	1600m	1400m	1200m	1000m	800m	600m	400m	200m
Section Times	2:00.22 [7] (0:08.12)	1:52.10 [2] (0:11.37)	1:40.73 [1] (0:11.71)	1:29.02 [2] (0:12.33)	1:16.69 [2] (0:12.75)	1:03.94 [2] (0:12.65)	0:51.29 [2] (0:12.29)	0:39.00 [2] (0:12.40)	0:26.60 [3] (0:13.08)	0:13.52 [5] (0:13.52)
Average Speed [km/h]	44.3	63.5	61.4	58.9	56.4	57.2	59.2	58.5	55.4	53.2
Top Speed [km/h]	63.0	65.3	62.2	60.2	57.8	59.1	60.3	60.5	56.8	54.3
Avg. Dist. to Rail [m]	0.9	0.5	1.1	1.0	1.5	1.4	2.2	1.8	2.9	4.0
Avg. Stride Freq. [Hz]	2.1	2.3	2.3	2.2	2.2	2.1	2.2	2.2	2.2	2.1
Avg. Stride Length [m]	5.9	7.6	7.4	7.2	7.0	7.1	7.4	7.3	7.1	6.9



- [] Ranking at each section and finish
- .-.-.- No data available at this section
- NA No data available



Horse/Jockey Name	Don'tkickamooow
Final Rank	8
Fastest Section Time (Section)	0:08.26 (Overall)
Top Speed [km/h] (Section)	65.8 (1800m)
Race State	Finished



Aquis Park Gold Coast Poly QLD Professional

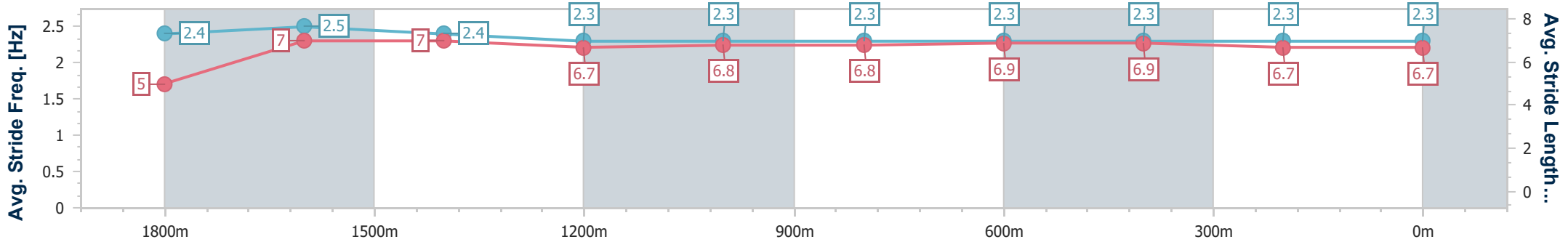
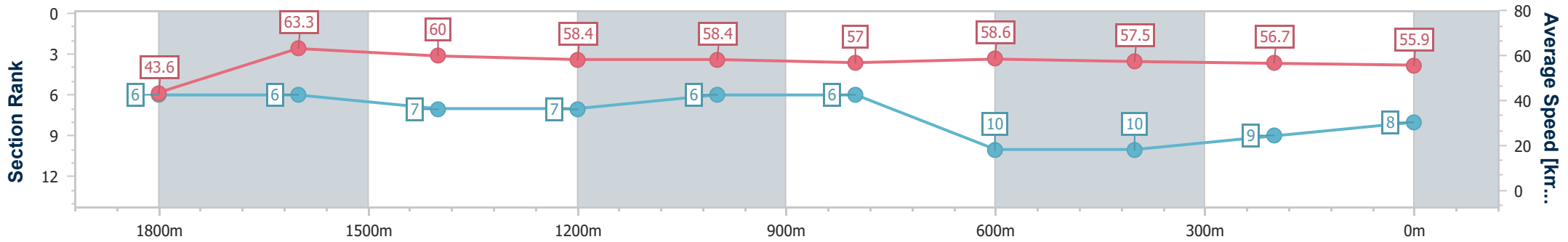
Race 4: KITCHEN CABINET SPECIALIST Maiden Plate - 1900m



10 June 2023 - 14:20

Track Rating: Synthetic , Weather: Fine, Rail Position: True

Section	Overall	1800m	1600m	1400m	1200m	1000m	800m	600m	400m	200m
Section Times	2:00.50 [8] (0:08.26)	1:52.24 [6] (0:11.54)	1:40.70 [6] (0:12.17)	1:28.53 [7] (0:12.56)	1:15.97 [7] (0:12.31)	1:03.66 [6] (0:12.72)	0:50.94 [6] (0:12.47)	0:38.47 [10] (0:12.75)	0:25.72 [10] (0:12.78)	0:12.94 [9] (0:12.94)
Average Speed [km/h]	43.6	63.3	60.0	58.4	58.4	57.0	58.6	57.5	56.7	55.9
Top Speed [km/h]	60.6	65.8	61.6	59.9	59.4	58.2	59.9	59.8	58.1	56.9
Avg. Dist. to Rail [m]	6.8	4.9	3.2	2.3	3.1	2.5	3.0	3.7	3.6	5.1
Avg. Stride Freq. [Hz]	2.4	2.5	2.4	2.3	2.3	2.3	2.3	2.3	2.3	2.3
Avg. Stride Length [m]	5.0	7.0	7.0	6.7	6.8	6.8	6.9	6.9	6.7	6.7



- [] Ranking at each section and finish
- .-.- No data available at this section
- NA No data available



Horse/Jockey Name	Another Dime
Final Rank	9
Fastest Section Time (Section)	0:08.27 (Overall)
Top Speed [km/h] (Section)	64.1 (1800m)
Race State	Finished



Aquis Park Gold Coast Poly QLD Professional

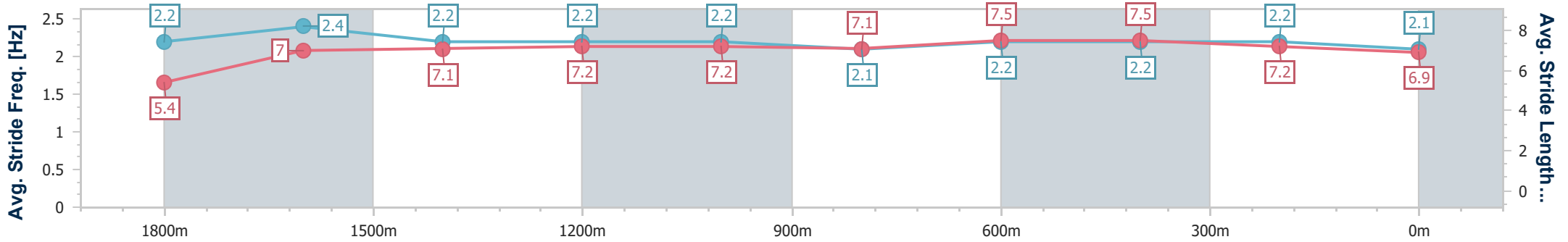
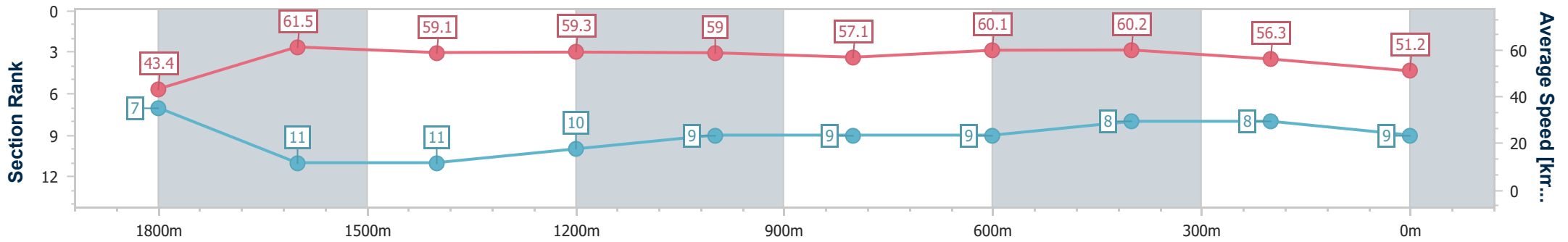
Race 4: KITCHEN CABINET SPECIALIST Maiden Plate - 1900m



10 June 2023 - 14:20

Track Rating: Synthetic , Weather: Fine, Rail Position: True

Section	Overall	1800m	1600m	1400m	1200m	1000m	800m	600m	400m	200m
Section Times	2:01.29 [9] (0:08.27)	1:53.02 [7] (0:11.86)	1:41.16 [11] (0:12.34)	1:28.82 [11] (0:12.30)	1:16.52 [10] (0:12.22)	1:04.30 [9] (0:12.71)	0:51.59 [9] (0:12.20)	0:39.39 [9] (0:12.33)	0:27.06 [8] (0:12.99)	0:14.07 [8] (0:14.07)
Average Speed [km/h]	43.4	61.5	59.1	59.3	59.0	57.1	60.1	60.2	56.3	51.2
Top Speed [km/h]	58.6	64.1	61.1	60.1	60.3	58.8	61.6	61.8	58.4	55.2
Avg. Dist. to Rail [m]	10.3	6.0	3.0	1.8	2.9	2.7	3.7	5.7	8.6	12.4
Avg. Stride Freq. [Hz]	2.2	2.4	2.2	2.2	2.2	2.1	2.2	2.2	2.2	2.1
Avg. Stride Length [m]	5.4	7.0	7.1	7.2	7.2	7.1	7.5	7.5	7.2	6.9



- [] Ranking at each section and finish
- .-.- No data available at this section
- NA No data available



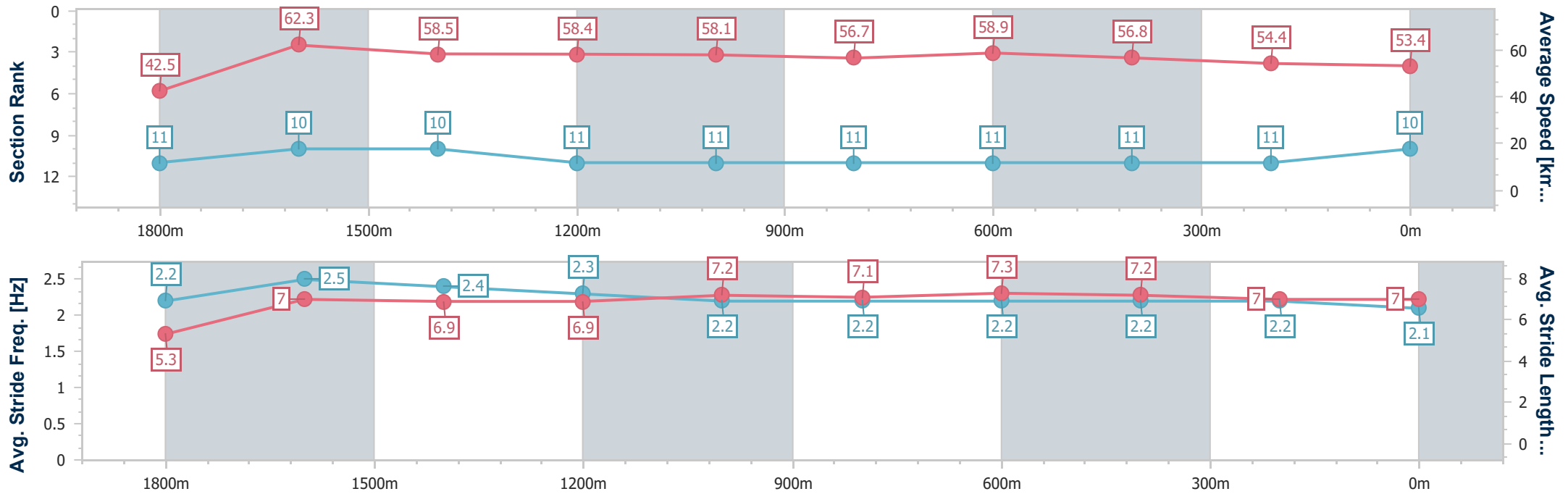
Horse/Jockey Name	Fit Of Rage
Final Rank	10
Fastest Section Time (Section)	0:08.48 (Overall)
Top Speed [km/h] (Section)	64.5 (1800m)
Race State	Finished



Aquis Park Gold Coast Poly QLD Professional
Race 4: KITCHEN CABINET SPECIALIST Maiden Plate - 1900m
 10 June 2023 - 14:20
 Track Rating: Synthetic , Weather: Fine, Rail Position: True



Section	Overall	1800m	1600m	1400m	1200m	1000m	800m	600m	400m	200m
Section Times	2:01.71 [10] (0:08.48)	1:53.23 [11] (0:11.59)	1:41.64 [10] (0:12.33)	1:29.31 [10] (0:12.38)	1:16.93 [11] (0:12.39)	1:04.54 [11] (0:12.69)	0:51.85 [11] (0:12.32)	0:39.53 [11] (0:12.75)	0:26.78 [11] (0:13.27)	0:13.51 [11] (0:13.51)
Average Speed [km/h]	42.5	62.3	58.5	58.4	58.1	56.7	58.9	56.8	54.4	53.4
Top Speed [km/h]	59.4	64.5	61.0	59.0	58.6	58.7	60.2	59.0	55.2	55.2
Avg. Dist. to Rail [m]	6.5	1.8	0.6	0.5	0.8	0.6	1.0	1.8	2.0	2.7
Avg. Stride Freq. [Hz]	2.2	2.5	2.4	2.3	2.2	2.2	2.2	2.2	2.2	2.1
Avg. Stride Length [m]	5.3	7.0	6.9	6.9	7.2	7.1	7.3	7.2	7.0	7.0



- [] Ranking at each section and finish
- .-.- No data available at this section
- NA No data available



Horse/Jockey Name	Toptimistic
Final Rank	11
Fastest Section Time (Section)	0:08.46 (Overall)
Top Speed [km/h] (Section)	64.2 (1800m)
Race State	Finished



Aquis Park Gold Coast Poly QLD Professional

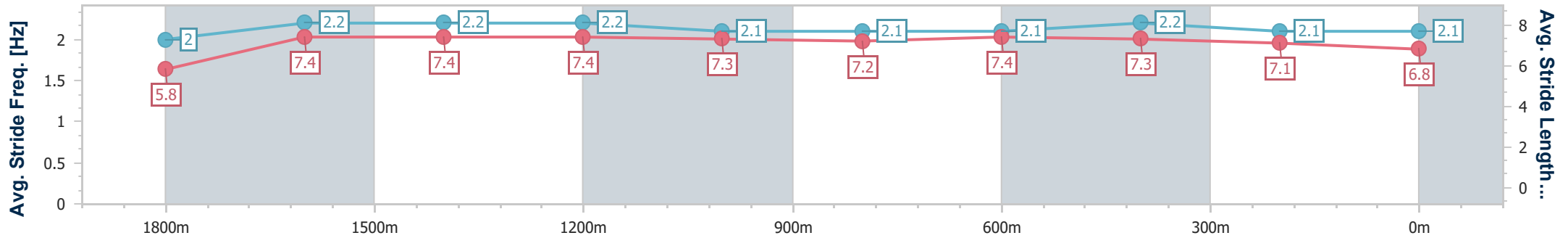
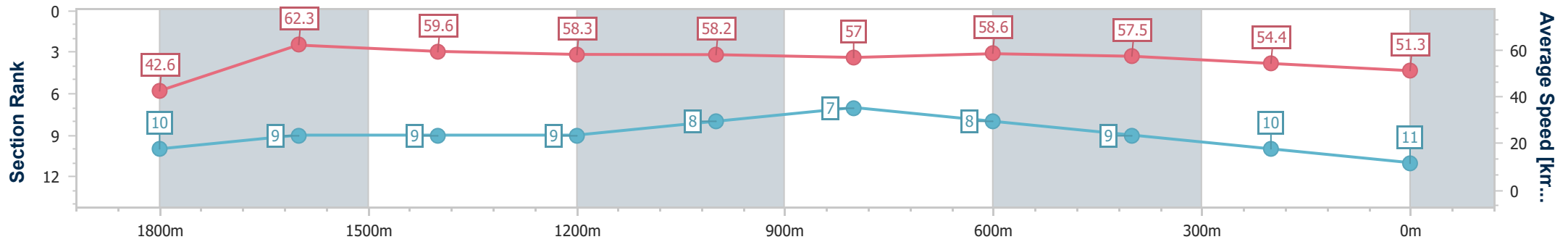
Race 4: KITCHEN CABINET SPECIALIST Maiden Plate - 1900m



10 June 2023 - 14:20

Track Rating: Synthetic , Weather: Fine, Rail Position: True

Section	Overall	1800m	1600m	1400m	1200m	1000m	800m	600m	400m	200m
Section Times	2:01.88 [11] (0:08.46)	1:53.42 [10] (0:11.58)	1:41.84 [9] (0:12.13)	1:29.71 [9] (0:12.40)	1:17.31 [9] (0:12.35)	1:04.96 [8] (0:12.67)	0:52.29 [7] (0:12.31)	0:39.98 [8] (0:12.62)	0:27.36 [9] (0:13.30)	0:14.06 [10] (0:14.06)
Average Speed [km/h]	42.6	62.3	59.6	58.3	58.2	57.0	58.6	57.5	54.4	51.3
Top Speed [km/h]	59.0	64.2	60.4	59.2	58.9	59.1	59.2	59.2	55.2	53.4
Avg. Dist. to Rail [m]	4.4	1.4	1.1	0.7	0.7	0.5	0.7	1.4	2.2	2.0
Avg. Stride Freq. [Hz]	2.0	2.2	2.2	2.2	2.1	2.1	2.1	2.2	2.1	2.1
Avg. Stride Length [m]	5.8	7.4	7.4	7.4	7.3	7.2	7.4	7.3	7.1	6.8



- [] Ranking at each section and finish
- .-.- No data available at this section
- NA No data available